

**FEBRURAY 22<sup>ND</sup> 2021**

**EXPRESSION OF INTEREST (EOI)**

**Consultancy to Conduct Baseline Survey for  
for a Baseline Survey Scaling Investment for Resilience of  
East Africa Coffee Producers Project - (Extension Phase)**

**SUBMITTED**

TO  
SOLIDARIDAD EAST & CENTRAL AFRICA  
NAIROBI, KENYA

**Noble Consultants Company Limited**



P.O. Box 448-200,  
Nairobi, Kenya  
Tel. 0722888072, 0732702359  
Email: [mhngutu@gmail.com](mailto:mhngutu@gmail.com)

## TECHNICAL PROPOSAL

**FROM:** Noble Consultants Company  
Limited  
P P.O. Box 448-200,  
Nairobi, Kenya  
Email: [mhngutu@gmail.com](mailto:mhngutu@gmail.com)

**TO:** Solidaridad East & Central Africa,  
P.O. Box 42234-00100, GPO Kirichwa  
Road,  
Nairobi, Kenya  
[procurement.eca@solidaridadnetwork.org](mailto:procurement.eca@solidaridadnetwork.org)

Dear Sir/Madam,

**Subject: Consultancy to Conduct Baseline Survey for a Baseline Survey Scaling Investment for Resilience of East Africa Coffee Producers Program - (Extension Phase).**

We, Noble Consultants Company Limited, herewith enclose a Technical Proposal for selection of our firm as consultants for 'Consultancy to Conduct Baseline Survey for a Baseline Survey Scaling Investment for Resilience of East Africa Coffee Producers Program - (Extension Phase)'

Yours faithfully,

**Mr. Mzee Hamisi Ngutu**  
Managing Director  
Noble Consultants

<b>1.0 Introduction.....</b>	<b>4</b>
1.1 Background Information .....	4
1.1.1 Background to the study and project .....	4
1.2 Project indicators, Outcomes and beneficiaries.....	5
1.3 Scope and purpose of the Assignment .....	5
1.4 Expected scope, outputs and deliverables of the study.....	6
<b>2.0 Competency and Relevant Experience of Noble Consultants Company in Relation to the Consultancy .....</b>	<b>8</b>
2.1 Introduction .....	8
2.2 Synopsis of CV for Expert to be involved in this consultancy .....	9
<b>3.0 Comments/Suggestions of Consultant .....</b>	<b>10</b>
3.1 On the Terms of Reference (TOR):.....	10
3.2 On the data, services and facilities to be provided by the Client in the EOI: .....	10
<b>4.0 Description of The Methodology and Sample Size Determination .....</b>	<b>11</b>
4.1 Details on methodology.....	11
4.1.1 Key Aspects of the Services .....	11
4.1.2 Structure of the Tasks and Activities.....	12
4.1.1.3 Detailed Methodology of Tasks and Activities / Sub Tasks: .....	13
Task 1: Mobilization and Inception .....	13
<b>5.0 Work Plan/Time Schedule .....</b>	<b>16</b>
<b>Appendices .....</b>	<b>5</b>
Appendix 1: Detailed Methodology.....	5
1A: Task 2: Development of Survey Tools and Data Collection.....	5
1B: Task 3: Data Analysis.....	8
1C: Quality Control Procedures .....	9
1D: Task 4: Preparation of Baseline Study Report. ....	9
Appendix 2 Curriculum Vitae (CV) for Proposed Key Staff .....	11
Appendix 3: Summary of other works done jointly through the Noble Consultants Ltd or individually by the consultants .....	31

## **1.0 Introduction**

### **1.1 Background Information**

#### **1.1.1 Background to the study and project**

SOLIDARIDAD strives to be an organization that understands the signs of modern times, seeking to be a Civil Society Organization (CSO) with its own place and role in society, while simultaneously interacting with Governments and markets. The organization envisions a world in which all we produce, and all we consume can sustain us while respecting the planet and the next generations. SOLIDARIDAD embraces the public-private and people partnerships (PPPP) in order to test innovations, speeding up change, and take success to scale. Globally, SOLIDARIDAD works around coffee and other 12 commodities/sectors.

The Coffee Resilience Program 2018-2022 dubbed *Practice for Change (PFC)* is a multi-country program with 2 main result areas as per SOLIDARIDAD's Strategic vision: Good practices (GP) and Robust Infrastructure. The program supports small and medium scale coffee farmers/producers across 3 East African countries; Tanzania, Uganda, and Kenya. The program was designed to address a myriad of challenges facing East African Coffee farmers which include; high costs of production, poor governance at the cooperative level, decreasing coffee productivity, poor quality of coffee, erratic weather conditions, low income earned by coffee farmers, limited access to finance for coffee farmers and the need for a data-driven sector

Despite the above issues, smallholder farming is a resilient practice and has a strong future for East African coffee producers. Smallholder farming has stood strong despite the tribulations that some of these countries have undergone since the '70s. It is, however, imperative that the sector players should continue to work in a more coordinated and collaborative manner. SOLIDARIDAD East and Central Africa in a consortium with the public and private sector players work towards driving an inclusive, resilient, and economically viable coffee production region that moves from slow and small to speed and scale. In the first phase of the program (2018-2020), 23,500 farmers were reached in Kenya, Uganda, and Tanzania.

In the **extension phase (2021-2022)**, an additional 27,000 farmers will also be reached in the same countries.

This study is part of the Coffee Resilience Program 2018-2022 (Extension Phase), whereby the program wishes to have an additional 27,000 farmers will also be reached in Kenya, Uganda and Tanzania benefit from the program activities.

#### **1.1.2 Project Description**

The programs aims to increase productivity to 4 kg of cherry per tree (from a national average of 2 kg per tree) for smallholder coffee farmers and 6 kg of cherry per tree (from a national average of 3 kg per tree) for medium-scale farmers as a result of Good practices (GP) by 2023; increase quality by 25% (premium grades reaching 70% from 45%) as a result of GP package by 2021; 20% increase in income for farmers as a result of increased coffee productivity & diversification; ensure that 10% women membership and direct access to knowledge and income from coffee by 2021; improve economic and farming performance data available to farmers, cooperatives, and financial institutions through ICT solutions; improve farmers' access to finance to invest in good practices and/or new

technologies; secure € 1 million of blended finance from financial institutions or investors to implement in good practices and robust infrastructure by 2021; and improve governance, efficiency, and accountability in coffee cooperatives involved in the project.

## 1.2 Project indicators, Outcomes and beneficiaries

<b>Program level indicators</b>	<ul style="list-style-type: none"> <li>i) Reduce high costs of production and improve incomes earned by coffee farmers;</li> <li>ii) Improve poor governance at the cooperative level;</li> <li>iii) Improve coffee productivity, poor quality of coffee;</li> <li>iv) Mitigate erratic weather conditions;</li> <li>v) Enhance/improve access to finance by coffee farmers;</li> <li>vi) Have a data-driven coffee sub-sector.</li> </ul>
<b>Project Outcomes</b>	<ul style="list-style-type: none"> <li>i) Increase productivity to 4 kg of cherry per tree (from a national average of 2 kg per tree) for smallholder coffee farmers and 6 kg of cherry per tree (from a national average of 3 kg per tree) for medium-scale farmers as a result of Good practices (GP) by 2023.</li> <li>ii) Increase quality by 25% (premium grades reaching 70% from 45%) as a result of GP package by 2021.</li> <li>iii) 20% increase in income for farmers as a result of increased coffee productivity &amp; diversification.</li> <li>iv) 10% women membership and direct access to knowledge and income from coffee by 2021.</li> <li>v) Economic and farming performance data available to farmers, cooperatives, and financial institutions through ICT solutions.</li> <li>vi) Farmers' access to finance to invest in good practices and/or new technologies.</li> <li>vii) € 1 million of blended finance secured from financial institutions or investors to implement in good practices and robust infrastructure by 2021.</li> <li>viii) Improved governance, efficiency, and accountability in coffee cooperatives involved in the project.</li> </ul>
<b>Beneficiaries</b>	By 2022, an additional 27,000 farmers will be reached by the Coffee Resilience Program 2018-2022 ( <i>Practice for Change</i> ) in Kenya, Uganda, and Tanzania.

## 1.3 Scope and purpose of the Assignment

The main objective of the baseline survey is to prepare a pre-project / baseline information of the target beneficiaries as per the indicators of program objectives and expected results specified in the program document and the program results framework.

The purpose of this baseline is to collect data as benchmark for proposed activities against all the project outputs and outcomes to be included in the project, and qualifying project indicators (output and outcome level) for the project implementation phase. The survey will be conducted by way of designing data collection methodologies and collect data on all indicators of the program and program's Results Framework (to be shared with the successful candidates in preparation for the interview process). Moreover, it will promote synergies with other indicators

in the program's overall Results Framework and Theory of Change.

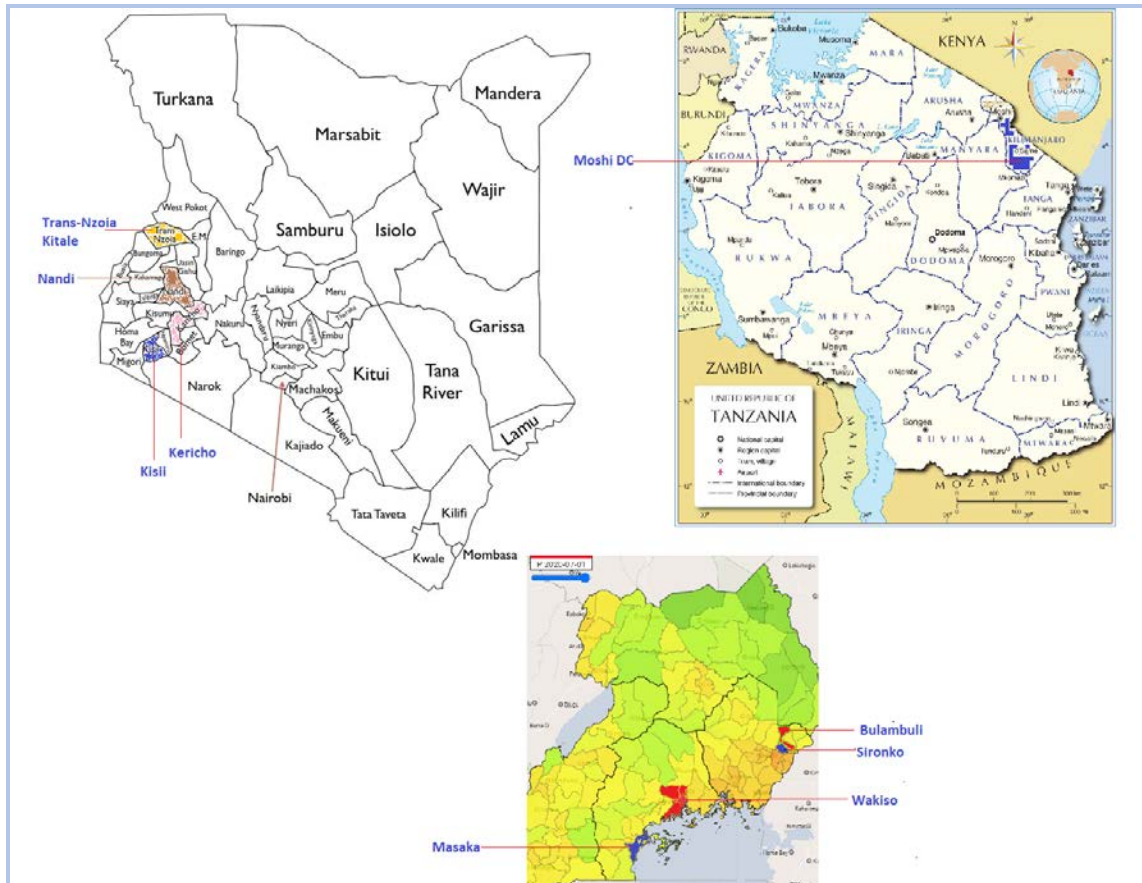
The methodology(ies) will be replicable for the mid-term and final evaluation processes as well as for the ongoing monitoring processes – as espoused in the Monitoring, Evaluation, Accountability and Learning (MEAL) Framework. The baseline survey will provide the benchmarks against which any changes resulting from the program interventions and results will be measured. Moreover, it is envisaged that the methodology can be replicated in similar SOLIDARIDAD programs as well as generating lessons for the future.

The **specific objectives** of the baseline survey study will be to:

1. To collect and analyze data on the verifiable indicators from the program results framework.
2. To collect and analyze the key information of the existing situation of the program's targeted beneficiaries (including coffee farmers, co-operatives, and coffee boards among others), service providers, and/or related stakeholders.

#### 1.4 Expected scope, outputs and deliverables of the study

The works involve designing, planning, carrying-out and presenting the program's baseline study for results at all levels, program effectiveness and sustainability. The study is to be conducted in Kenya (Kisii, Nandi, Kericho and Trans Nzoia counties), Uganda (Sironko, Bulambuli, Masaka, Wakisio districts) and Tanzania (Moshi DC) based on a strategic, comprehensive and replicable sampling approach.



*Figure 1: Map of the Countries and areas where the study will be conducted*

Overall, the baseline information will enable SOLIDARIDAD identify the exact conditions existing at the start of the *Extension Phase* of the program and enable it to measure the degree and quality of change during program implementation.

The expected outputs/deliverables from this assignment are;

- **An inception report** prior to initiating the study, to be submitted electronically in English and detailing: the baseline study approach; sampling framework; data collection strategy and methodologies; data collection tools, criteria. Methods and plan for sample size determination and procedures and draft budget for agreement

The methodology for this study will include both direct and indirect data collection, analysis and cross-referencing, and formulating recommendations thematically and as area/site-specific. The Consultant will finalize the methodology to undertake this study in line with the scope of the assessment, presented and refined with the management during the Inception Meeting.

The methodology to be used during this assessment will overall, include, but not be limited to the following: reviewing the existing relevant secondary information and reports related to the East Africa coffee origin; reviewing of previous SOLIDARIDAD coffee program level documents and reports; meeting and discussing with key SOLIDARIDAD staff, partners, and key informants at Office and field implementation levels; undertaking field visits in the implementation areas for data collection, observations, and triangulation; holding community-level participatory meetings and focused group discussions for data collection and information gathering; and carrying out a household-level survey for data collection through structured questionnaires.

Data collection will also entail analysis of climate risks and vulnerability where both secondary data and primary data through qualitative and quantitative methodologies will be done., while putting special emphasis will be put on women spaces, youth engagement, and people with disabilities participation, so as to understand and recommend interventions on issues concerning these interest groups from a gender, youth, and people with disability inclusion's perspective.

The consultant will also use data from local institutions or organizations and ensure that that data is analyzed and verified and data collection processes as well as a quality assurance plan setting out the systems and processes for assuring the quality of the research process and deliverable, testing of the survey tools, training of enumerators, logistical and management planning, field work protocols and data verification; § data cleaning and analysis.

- **Draft baseline report:** The gathered information will be outlined in following standard format: Title Page; Acronyms; Executive Summary; Table of Contents; Introduction/Background; Literature Review; Methodology -specifying any limitations /challenges and changes to the initial design; Findings of the study with analysed data giving a presentation of baseline values for all project indicators at all results levels. To give/update the proposed indicators and monitoring methods for measuring impact and sustainability of interventions; Conclusion and Recommendations- as per the project's

outcomes, outputs, activities, and indicator; and Annexes/Appendices- Electronic annexes with the site-by-site raw data used for the analysis

- **Final baseline report** takes into account the feedback from the consortia and adjustments made to the draft report.
- **Baseline database** including all primary data collected (in excel and/or any other or similar application).
- **PowerPoint presentation** summarising the main findings and key recommendations for the project

## **2.0 Competency and Relevant Experience of Noble Consultants Company in Relation to the Consultancy**

### **2.1 Introduction**

Noble Consultants Company Limited (Noble CCL) is one of the East African regional agricultural and rural development consulting firms. Founded in 2003, the firm's core business is providing consultancy services in the agriculture sector. It is located in Electricity house, in Nairobi, Kenya.

Since its inception, Noble CCL has offered specific, solutions within its core business. Key projects/studies undertaken by the firm including the recently completed study on climate Academy Project to increase the climate change resilience of coffee farmers; and the one on coffee cooperative societies in Kenya, aimed at identifying their strengths and weaknesses in a liberalized primary commodity marketing system. Other projects undertaken by Noble CCL in the recent past include:

<b>S. No</b>	<b>Assignment Title</b>	<b>Client</b>	<b>Year</b>
1	End term Climate Academy Project was developed to increase the climate change resilience of coffee farmers organized in selected FCSs	Fairtrade Africa	2020
2	Understanding the situation of small and medium estate coffee groups in Kenya in relation to access to better services and markets	Rainforest Alliance-Utz	2019
3	Sustainable Diets for ALL Kenya Country Baseline Survey	Human Institute for Co-operation with Developing Countries	2018
4	End of Project Evaluation for Solidaridad's Farmer Support Program on BCI Cotton- Kenya 2013 – 2015	Dioraphite Foundation / Solidaridad	2016
5	The Impact of Certification on Selected Smallholder Coffee Farmers in Kiambu and Nyeri Counties in Kenya	Centre for International Development Issues Nijmegen, The Netherlands	2013
6	The Potato Value Chain in Narok,	SNV/HIVOS/Solidaridad.	2013



	Bomet, Nyandarua and Meru Counties in Kenya		
--	---	--	--

## 2.2 Synopsis of CV for Expert to be involved in this consultancy

The following gives a synopsis of key team for the consultancy.

### **Eng. Samuel Njuguna Ndirangu**

Holds a Msc in Economics, Policy and management and a Bsc in agricultural Engineering. He is currently in his PhD studies on techno-economic studies of hybrid solar Dryers. He teaches and practices (at the University) project management, engineering economics, Entrepreneurship, Economics among other areas. He has undertaken over fifteen consultancy assignment in End of project evaluations, baseline surveys, enterprises development including trade related issues, among other areas as illustrated in the annexed CV

The organisation through the individuals indicated above has expertise in the areas of focus. Samples of works related to this assignment includes

### **Joram M Gicheru**

Holds a Msc in Economics, Policy and Management and a BSc in Agriculture. He is fast experience in agricultural sector, having worked in the Ministries of Agriculture and Ministry of Cooperatives for over 20 years. He has worked in the coffee sector as a trainer and also in promoting and developing the coffee cooperative sector. He has also worked in the Ministry of devolution. Joram has worked and consulted on projects and tasks related to improving livelihoods of Kenyan communities and on enterprise development, including on targeted project areas of improved profitability and resilience of enterprises (income change), enhanced social capital and financial resilience of Kenyan communities and women's economic empowerment.

### **Godfrey Ndirangu**

An Agricultural Economist, trained up to MSc level. Godfrey Ndirangu has 25 years' experience working with community. He is an expert in Value chain analysis, Financial and Economic analysis, Project appraisals, Proposal Development, monitoring and evaluation, Networking and collaboration linkage in PPP. He has over the years conducted baseline surveys, pertaining irrigated agriculture, and food security. He has done at National Level, Training of Trainers of Full Proposal development for communities under Community Development Initiatives (CDI) under CDTF (EU Program). Training of Trainers on community social mapping and PADev tools.

Ndirangu has worked with the Ministry of Agriculture for 14 years and National irrigation Board for two years. When in the ministry Ndirangu was District Agribusiness Development officer in Koibatek District for 2 years. He has coordinated various marketing studies and value chain analysis. He has also worked as Agro-Economist and Agri-business expert for various projects. During his work in the Ministry of Agriculture and National Irrigation Board, he trained farmers on appropriated farming techniques, and agricultural value chain development. He also

mobilized farmers in Bura and Hola Irrigation scheme to grow sorghum for EABL under contract farming.

**Mzee Ngutu.** He has an MSc and BSc Agriculture. He has wide experience in the coffee sector having worked in senior management in the coffee cooperatives sector. He has also consulted widely in the coffee sector

(A Sample of other Relevant Projects in the Last 5 Years undertaken jointly or individually is in annex 2)

### **3.0 Comments/Suggestions of Consultant**

#### **3.1 On the Terms of Reference (TOR):**

We understand that we will work under both SOLIDARIDAD who will manage the consultancy task jointly in close consultation. We are aware that for administrative purpose, SOLIDARIDAD is responsible for managing the contract including the procurement process, signing agreement with the selected company/firm, managing communications, whilst the consortia will closely involve in the whole process of ensuring the quality of the work through supporting in selection of capable firm/company/ consultant and commenting on the draft tools and reports at various levels under the Program Advisor to perform the tasks under the TOR.

We broadly feel that the TORs are clear on what is requirement of the study and particularly the consultant inputs and in particular we feel that:

1. The scope of work based on the objectives is clearly articulated and manageable within the stated timeframe.
2. The given scope of the assignment in terms of coverage and tasks, and the guide on methodology gives enough foundation for the development of the detailed methodology, including identification of surveys tools, and data collection.
3. The expected deliverables and their contents are also clear to us and the timelines will be agreed upon between the client and the consultant.

It is clear to us that us, the consultants, in consultation with SOLIDARIDAD will be responsible for the following areas:

- Identify and engage relevant stakeholders and facilitate relevant consultative stakeholder meetings
- Coordinating the assignment in the three countries of Kenya, Uganda and Tanzania.
- Review relevant reports, guidelines and other publications to inform the studies
- Undertake the baseline to generate comprehensive baseline information on the status of the relevant parameters in relation to project indicators

#### **3.2 On the data, services and facilities to be provided by the Client in the EOI:**

1. We hope provisional information and documents will be availed by the client particularly related to the proposed project
2. Initial briefing meeting will be necessary to agree on any issues/need for clarification that could emerge so as to enable successful execution of the project.
3. We will provide detailed description of support that we will require from the project manager, and other stakeholders in the inception report.

## **4.0 Description of The Methodology and Sample Size Determination**

### ***Introduction***

The main objective of the baseline survey is to prepare a pre-project / baseline information of the target beneficiaries as per the indicators of project objectives and expected results specified in the project document and the project results framework.

The baseline study will adopt a mixed methods approach, integrating quantitative and qualitative methods to ensure that data collected is triangulated and can be communicated, explained and contextualised. Our research team will combine a minimum of household surveys / questionnaires with structured interviews, Key Informant Interviews and focus group discussions. We will ensure use of innovative methods to collect and analyse data. The data collected through primary means will be complemented with data from secondary sources; project reports and literature from other sources.

To achieve the above the approach of the study is very critical to the completion of the assignment in time. The Consultant will use an experienced team of professionals to undertake the Baseline Survey. At all times the focus will be on ensuring the final deliverables are able to sufficiently address the objectives of the study.

The Consultant will make use of the following approach in executing the assignment:

- Participatory approach that involves and motivates stakeholders and other participants in the study to volunteer key information and opinions with regard to the study.
- Mobilize a team of professional and experienced experts that will work together, enriching each other's capabilities with proven ability to handle all issues and requirements of the assignment to the satisfaction of the Client.
- Involve the Client and other key stakeholders in all stages of the assignment and in most decision-making processes, thereby increasing the ownership of the assignment findings by all stakeholders.
- Ensure that the Terms of Reference for the proposal are clearly understood.
- Ensure that each step in the programme is well recorded and documented, and accepted by the Client before advancing to the next item on schedule.
- Assure quality results and documentation through a quality assurance plan which will guide the deliverables and services of the team of experts.
- Applications of lessons learned in similar projects within the project area and in the Country.

### **4.1 Details on methodology**

#### **4.1.1 Key Aspects of the Services**

**Stakeholder Participation:** Stakeholder participation is vital to ensure efficiency, equity in strategy development and sustainability of the assignment findings. The Consultant views this requirement as being of great importance especially in enhancing the acceptance of survey results.

The consultant will conduct an analysis in consultation with the Solidaridad team to find out

the key players in the selected regions/Counties and national level to be interviewed and those likely to participate in the upcoming project. This will also help identifying of possible documents to review.

#### *Steps in Conducting the Stakeholder Analysis*

We will develop a Stakeholder Analysis Matrix like the one below to carry out this task:

**Table 1:** Stakeholders analysis matrix

<b>Stakeholder</b>	<b>Stakeholder activities experience related to the project</b>	<b>Contacts and location of the stakeholders</b>
<b>Targets examples:</b> farmer organizations/ cooperatives, County and district key Ministry department and staff such as agricultural extension officers and trade officers, traders, buyers and coffee processors. Also project implementors at Office and field implementation levels., partners and supporters etc		

#### **4.1.2 Structure of the Tasks and Activities**

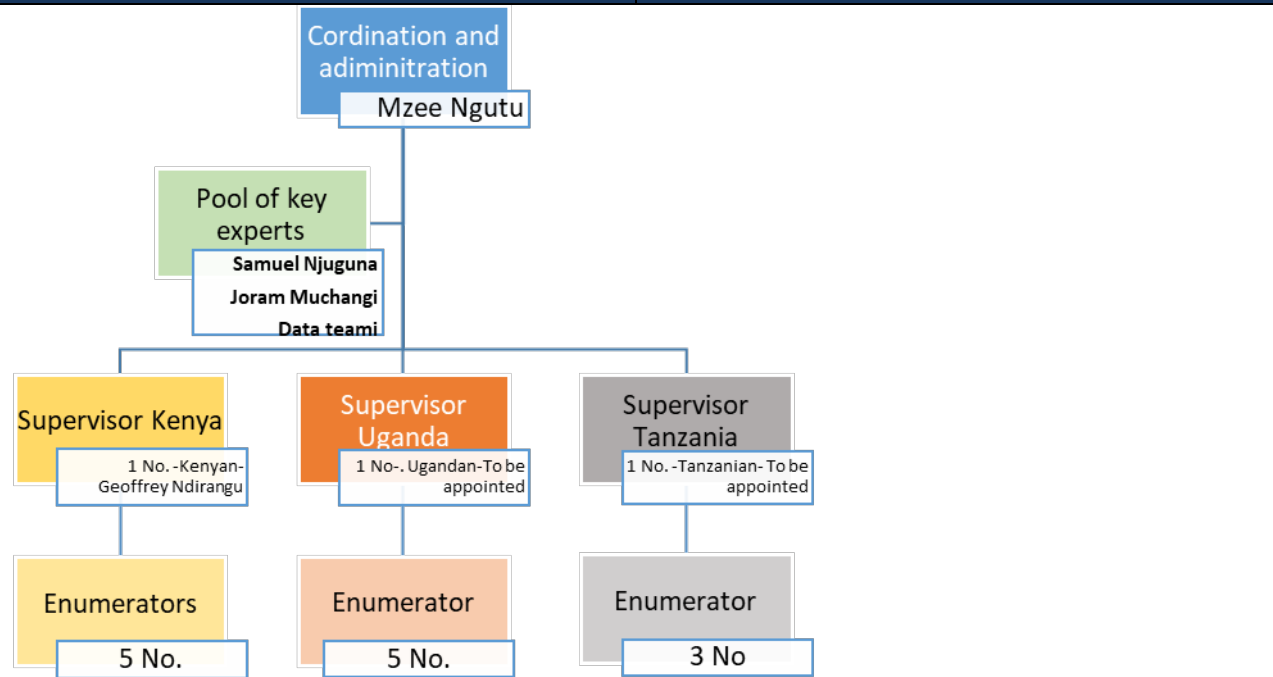
For easy understanding of the assignment, the Consultant structures the assignment into tasks and activities.

<b>Task / Activity</b>	<b>Activity Description</b>
<b>TASK 1:</b>	<b>Mobilization and Inception</b>
Activity 1.1	Preliminary meetings with the client and personnel mobilization
Activity 1.2	Setting up Logistics
Activity 1.3	Literature review and analysis of existing documentation
Activity 1.4	Preparation and submission of Draft Inception Report
Activity 1.5	Preparation and submission of the Final Inception Report
<b>TASK 2:</b>	<b>Development of Survey Tools, Data Collection</b>
Activity 2.1	Development of data collection tools, guides and checklists
Activity 2.2	Recruitment, training of supervisors and interviewers and pre-testing data collection tools
Activity 2.3	Data collection, consultative meetings and focus group discussions
<b>TASK 3:</b>	<b>Data Analysis</b>
3.1	Data entry, data cleaning, data analysis
<b>TASK 4:</b>	<b>Preparation of Baseline Survey Study Report</b>
Activity 4.1	Analysis and report writing of findings
Activity 4.2	Preparation of Draft Baseline Survey Report
Activity 4.3	Submission of Draft Baseline Survey Report
Activity 4.4	Submission of Final Baseline Survey Study Report to the client

### 4.1.1.3 Detailed Methodology of Tasks and Activities / Sub Tasks:

#### Task 1: Mobilization and Inception

Task 1:	Mobilization and Inception
<p><b>Objective</b></p> <ol style="list-style-type: none"> <li>1. Discussions with the client on the proposed methodology.</li> <li>2. Clarification of the Terms of Reference and Work Plan.</li> <li>3. Production of the Inception Report.</li> </ol>	<p><b>Output</b></p> <ol style="list-style-type: none"> <li>1. Inception Report</li> <li>2. Detailed Work Plan</li> </ol>
<p><b>Activities:</b></p> <p><b>Activity 1.1: Preliminary Meetings with the Client and Personnel Mobilization.</b>            The Consultant will hold start up meetings with SOLIDARIDAD and Consortia officials and project implementors. Discussions will be carried out regarding the Consultant’s proposed methodology and proposed work plan for conducting the assignment.</p> <p>The Consultant will identify data requirements and their sources and work out arrangements for support for the surveys and investigations. Further, discussions will be conducted on the program of works, proposed approach to data collection, analysis, approach to delineation of the project coverage, client support and mode of participation in the studies, time allocations and reporting.</p> <p>Following the signing of the consultancy agreement between the Client and Consultant, the key staff will be mobilized; the proposed experts are available for the assignment and mobilization will be affected immediately.</p> <p><b>Activity 1.2: Setting up Logistics.</b>            The Consultant will liaise with the client in the provision of logistical resources to facilitate efficient execution of the activities and production of deliverables. The consultant will ensure adherence to Covid-19 government protocols and requirements Teams will be formed to manage data collection</p> <p>The consultant will engage local supervisors to coordinate the activities in the three countries. The household questionnaires will be administered by local enumerators with guidance of the team lead and supervised by local/country supervisors. Some interviews on KII will be conducted online, after the KIIs have been identified by the local supervisors and the consultant with guidance of the client. Training of enumerators will also be online, this will further be reinforced by local supervisors and team leads.</p>	



**NB.** Number of enumerators to be adsjuted based on number of respondenst in each area

The survey will be conducted in the following locations shown in the maps;

- Kenya- Kisii, Nandi, Kericho, Kitale Counties;
- Tanzania- Moshi DC;
- Uganda- Sironko, Bulambuli, Masaka, Wakisio Districts

**Activity 1.3: Literature Review and Analysis of Existing Documentation.**

The Consultant will collect, review and analyze data from previous surveys related to the assignment. Part of the document to be reviewed will include project documents, including existing reports, project proposal, log-frame, budget and other relevant documents, a range of which will be agreed upon and made available prior to the implementation of the study.

The Consultant will identify gaps in the reviewed data and factor in the development of data collection and survey tools for the Baseline Study.

Secondary data will be collected from the target counties from institutions and concerned government departments and stakeholders.

**Activity 1.4: Preparation and Submission of Draft Inception Report.**

After review of the available documents, meetings with the Client, Stakeholders and review of secondary data, the Consultant will prepare a Draft Inception Report. This shall contain a detailed outline of proposed activities and timelines for the assignment as well as the Consultant’s proposed approach for field data collection, field visits and investigations.

**Task 1:****Mobilization and Inception**

Additionally, the Draft Inception Report will outline all necessary tools and equipment required for data collection, field visits and investigations, socio-economic surveys and analysis for presentation and submission to the Client.

Suggested data sources and proposed sites for field visits shall be presented to the Client for approval and adoption.

After preparation of the draft inception report, the Consultant will present the inception report and receive comments from the Client.

**Activity 1.5: Preparation and Submission of the Final Inception Report.**

The Consultant will incorporate comments from the client and stakeholders in preparation of the Final Inception Report. Thereafter, the final report will be submitted to the client.

The **Detailed Methodology** is in the annex and has following aspects covered:

- **Development of data collection tools-** Household questionnaires, checklist for FGDs and KIIs will be developed. The kind of information to be collected is given in the annex
- **Recruitment, training of field staff (supervisors, interviewers, observers/record reviewers) and pre-testing data collection tools-**the enumerators will be from the respective areas. They will be trained online and this will be reinforced with further training by supervisors.
- **Data collection-** this will be through use of mobile tools-CsPro or ODK kit
- **Sampling:** Stukel and Friedman, 2016 formula has been used to select the beneficiary farmer to be interviewed. This is based on number of beneficiary farmer and extra farmers to be interviewed as control group. A total sample size of 403 farmers has been calculated. A control group of 40% will be adopted (Israel, 1992), imply 161 of interviewees for control and 242 as target beneficiaries. Also, FGD has been planned and will involve 10-15 farmers. All the sample will be divided proportionately based on population in among the 4 areas. Purposive sampling will be used to select other stakeholders
- **Data Analysis:** Data will be analysed using excel and SPSS
- **Quality Control Procedures:** This will be achieved through: recruitment of qualified and competent personnel; training of personnel; use of standard tools and forms for data collection; pre-testing of instruments; supervision of clerks and checking of data as its entered

## 5.0 Work Plan/Time Schedule

### 1. Baseline Survey

S/ No	Items of Work/Activities	Number of Days						Total			
		1	3	2	10	6	1		1	2	
1.	Briefing meetings-agreements and contracting	■									
2.	Review of relevant reports and literature of inception report		■								
3.	Developing baseline tools			■							
4.	Field work				■						
5.	Data analysis, writing draft report					■					
6.	Power point presentation of preliminary findings to the project team and donor.							■			
7.	Presentation of and discussion on the findings to SOLIDARIDAD								■		
8.	Final report preparation									■	
<b>Total (MAX)</b>											<b>30</b>

### 2. Completion and Submission of Reports

S/No.	Reports	Date
1.	Inception Report and tools submission	Day 6
2.	Draft Report	Day 22
3.	<b>Final Report</b>	<b>Day 30</b>



## **FINANCIAL PROPOSAL**

**FROM:** Noble Consultants Company  
Limited  
P P.O. Box 448-200,  
Nairobi, Kenya  
Email: [mhngutu@gmail.com](mailto:mhngutu@gmail.com)

**TO:** Solidaridad East & Central Africa,  
P.O. Box 42234-00100, GPO Kirichwa  
Road,  
Nairobi, Kenya  
[procurement.eca@solidaridadnetwork.org](mailto:procurement.eca@solidaridadnetwork.org)

Dear Sir/Madam,

**Subject: Consultancy to Conduct Baseline Survey for a Baseline Survey Scaling Investment for Resilience of East Africa Coffee Producers Program - (Extension Phase).**

We, Noble Consultants Company Limited, herewith enclose a Financial Proposal for selection of our firm as consultants for 'Consultancy to Conduct Baseline Survey for a Baseline Survey Scaling Investment for Resilience of East Africa Coffee Producers Program - (Extension Phase)'

Yours faithfully,

**Mr. Mzee Hamisi Ngutu**  
Managing Director  
Noble Consultants

**Financial Proposal (Kshs)**

S.N.	ITEM	NOTES	PAX	DAYS/ UNITS	COST PER DAY/UNIT (KES)	TOTAL (Kshs.)
<b>1</b>	<b>CONSULTANTS FEE</b>					
	<b>A. Direct Costs</b>					
	<b>ITEM</b>	<b>Description</b>	<b>No</b>	<b>Quantity</b>	<b>Rate</b>	<b>Total</b>
	Lead Consultant-lead team 1	20 consultant days	1	30	20,000	600,000.00
	Associate Consultant-lead team	15 consultant days	1	25	20,000	500,000.00
	3 Assistant Consultant/supervisors in Kenya, Uganda and Tanzania	10 consultant days	2	30	10,000	600,000.00
	Data management assistant	10	1	10	15,000	150,000.00
	<b>Sub-total</b>					<b>1,850,000.00</b>
	<b>B. Management Costs</b>					
	Office Expenses	Office Space, Electricity & Water	NCL Consultants to meet			0.00
	Printing	Color and Black printers Cartridges	NCL Consultants to meet			0.00
	Photocopy, binding etc	Consolidated	1	1	22,600	32,600.00
	Hire of tablets	No	10 day	13	5,000	65,000
	Communication costs	Postage etc	NCL Consultants to meet			0.00
		Telephone, internet, for eg online interviews, data sets etc	1	1	15,000	15,500
	<b>Sub-total</b>					<b>48,100.00</b>
	<b>Total 1</b>					<b>1,962,600</b>
<b>2</b>	<b>REIMBURSABLE COSTS</b>					
	<b>A. Transport Costs</b>					
	Daily Car Rental during data collection Tanzania	1 vehicle for the field	1	10	5,000	50,000.00
	Daily Car Rental during data collection Uganda	1 vehicle for the field	1	10	5,000	50,000.00
	Daily Car Rental during data collection Kenya	1 vehicle for the field	1	15	5,000	75,000.00
	Fuel data collection	35 days, two cars	1	35	3500	122,500.00
	Daily Travel Allowance and Accommodation	For 5 consultants	5	10	4,000	200,000.00
	<b>Sub-total</b>					<b>497,500</b>

<b>B. Survey Costs</b>					
Enumerators	13 enumerators per group (2 groups), 10 days for field study	13	10	3,000	390,000.00
COVID-19 Compliance items	Sanitizers-20, masks -10pkts	1	1	9,500	9,500
Provision for field logistics and refunds	Government staffs, farmers costs	1	1	30,000	50,000
<b>Sub-total</b>					<b>449,500.00</b>
<b>Total 2</b>					<b>947,000</b>
<b>TOTAL</b>					<b>2,909,600</b>
<b>VAT -16%</b>					<b>465,536</b>
<b>GRAND TOTAL</b>					<b>3,375,136</b>

**NB:** The budget can be discussed and adjusted after discussion to reflect the scope of activities and logistics. No budget has been factored for flights, stakeholders workshop etc

# Appendices

## Appendix 1: Detailed Methodology

### 1A: Task 2: Development of Survey Tools and Data Collection

Task 2:	Development of Survey Tools and Data Collection
<p><b>Objective</b></p> <ol style="list-style-type: none"> <li>1. Determine relevant information required.</li> <li>2. Develop data collection tools.</li> <li>3. Data collection.</li> </ol>	<p><b>Output</b></p> <ol style="list-style-type: none"> <li>1. Data collection tools</li> <li>2. Checklists</li> </ol>
<p><b>Activities:</b></p> <p><b>Activity 2-1: Development of data collection tools.</b></p> <p>The Consultant will develop and use different tools to gather primary data from the ground in the project area. A Household Survey questionnaire will be developed for use to elicit primary data from the households. Focus Group Discussion Guides as well as Key Informant Information Guides for the various groups and key informants will also be developed. This will provide a guideline on what data and documents to collect from each of the institutions and households visited and will also help to ensure that the various experts engaged on the project are all on the same page with regards to the objectives and the requirements of the study. The Consultant will develop the tools with reference to the parameters set out in the Terms of Reference and in reference to the indicators in the logical framework.</p> <p>The Tools will probe:</p> <ol style="list-style-type: none"> <li>i) General information-level of education, main occupations, land holdings, family sizes, areas under coffee, coffee varieties, change in cropping patterns etc.</li> <li>ii) Coffee production and post production issues; current practices eg input uses, coffee management, post-harvest management; acreage; production volumes; challenges and opportunities etc.,</li> <li>iii) Trends in coffee production, productivity, quality, cost of production and prices</li> <li>iv) Income trends-gross margins and coffee profitability at household level</li> <li>v) Marketing; types of markets- Certified markets, volumes traded in different markets- challenges and opportunities to accessing the various markets etc</li> <li>vi) Wealth/current incomes- assess current assets, income options and levels, proportion of income from coffee vis a vis other enterprise</li> <li>vii) The structural, systemic and environmental challenges limiting effective realisation of good incomes and productivity.</li> <li>viii) Climate effects: What the climate the risks and vulnerability in the area and the community, what are the current practices on mitigation and adaptation and what are the challenges and opportunities.</li> <li>ix) Financial management, value addition of coffee at household and cooperative levels.</li> <li>x) Skills level; status of training extension and other support services e.g. credit, financial services</li> <li>xi) Governance issues- farmers perception of coffee coop society (CFS) management- rating on richer scale on satisfaction with CFS, changes over time, issues limiting or facilitating</li> <li>xii) Social inclusion-The role of women and youth and vulnerable groups in the coffee value chains (like the right to own income and coffee; ownership and registration as owners, access to bank accounts; right to invest in land; decision making power within the family e.g., for use of resources for the children). Women spaces, youth engagement, and people with disabilities participation; what are their issues, how can they be involved, and</li> </ol>	

supported to engage in the target enterprise, their inclusion's perspective.

- xiii) Extent of community apathy in addressing the challenges faced in the coffee sector -rating the interest of participation, reasons, etc.
- xiv) The levels of inclusion of women in decision making around Market based agricultural Programs
- xv) Active women led groups and determine their capacities to carry out advocacy on women inclusion in economic development and
- xvi) Other indicator as outlined in the logical framework among others

The Consultant will discuss the data collection tool with the Client to obtain approval before pilot testing of the developed questionnaires/tools.

***Activity 2-2: Recruitment, training of field staff (supervisors, interviewers, observers/record reviewers) and pre-testing data collection tools***

The consultant will recruit well qualified interviewers from the project areas to carry out the household survey. KIIs and FGDs will be conducted by the key experts assisted by locals with a deep understanding of the local language. The key experts/supervisors will also be the supervisors of the interviewers. Training to enumerators and supervisors will be done online and this will be reinforced through further training/checks by country supervisors and leads.

The Consultant in consultation with the Client will then pilot test the developed questionnaires in selected areas upon consultation with the Client. The testing will seek to check if each question measures what it is supposed to measure, if all the words are understood, whether all respondents interpret the question in the same way and if all response choices are appropriate. It will also help ascertain if the range of response choices is actually used and if respondents correctly follow directions as well as check how long it takes to complete each questionnaire.

The interviewers will be trained on various skills key among them being;

- ✓ How to approach households
- ✓ Keeping track of interviews and non-response
- ✓ Informing participants and obtaining consent from the interviewee
- ✓ Using the forms and available tools, including making clarifications
- ✓ Conducting interviews

The Consultant will conduct this reconnaissance survey for purposes of ensuring that the survey tool captures the different data demands of the baseline survey. The findings in the testing phase will inform any further improvements to the data collection tools.

The final questionnaires/tools will be used to collect data in the project area.

***Activity 2-3: Data collection***

Data collection is an important aspect of any type of survey. Inaccurate data collection can impact the results of a study and ultimately lead to invalid results. The consultant will use both the qualitative and quantitative methods of data collection as previously cited.

The consultant will form two teams to ease data collection. Each team will consist of a team leader, supervisors and interviewers. Data will be collected for the households that have been sampled using the sampling techniques.

Electronic field data collection: The survey will be supported with smartphones equipped with Android operating system. The pretested tools will be input into Smartphone of data field collectors. Electronic mobile data collection forms preferably CSpro/ODK (pre-agreed with client) will be used. The use of mobile technology eliminated the need for data entry, drastically saving on time and reducing errors associated with pen and paper data collection alternative that

necessitates manual data entry.

The answers for each question will be coded to ease the analysis of data sets using analysis software such as SPSS. The electronic form will allow data to be collected when mapping each utility at a time and will include metadata such as GIS coordinates, real-time photo and other attributes such as village name, exact location. This will ensure real data is collected at the site and conveyed without interference by data collectors. Our data specialist will also provide real time support to the enumerators for data quality checks as data is being collected. No manual forms will be used in mapping of and related issues unless in the case of collecting qualitative feedback not captured on the electronic form. This will be captured and incorporated on the final report.

- **Key Informant Interviews:** Pre-determined questions within issue matrix will be used to solicit information (mostly broad, policy and managerial aspects) from a few selected staff in Public, Private and Civil Society Organizations, Community leaders, and beneficiaries etc. They shall be key sources of information and data.
- **Focus Group Discussions:** A questionnaire with closed questions shall enable consultant to collect data and information from the pre-agreed stakeholders, particularly beneficiaries, regarding their views on the project. The information will give a benchmark against which the project results, impacts and long-lasting changes in the lives of the beneficiaries at the end of the project will be measured. At least four per country if possible, will be undertaken; comprising of 10-15 beneficiaries where gender representation and Covid-19 requirements will be taken into consideration.

**Expert Observation:** On site observation by the consultant will be done and verification of the physical infrastructure works done and photo images captured.

**Case studies:** Case studies will be used to enforce the findings and to bring out lessons and best practices. This will enrich setting of indicators.

Data collected will be checked for such critical aspects such as gender disaggregation, completeness, validity, accuracy, uniformity and consistency. To ensure high data quality, the key experts will spot check or back check at least 30% of all household questionnaires filled by the interviewers and ensure all questionnaires are scrutinized for completion and quality.

#### **Sampling:**

The sample size (# of communities, # of farmers, # of stakeholders etc.) and selection criteria will be determined in collaboration with the consortia and the consulting team to provide a fair and statistically relevant representation of the project beneficiaries and stakeholders. Information shall be collected from across specified beneficiaries, partners and stakeholders functioning across the Vegetable and Chains, as well as financing of the same. Data will be dis-aggregated by gender and age -to include youth-is defined as people below 35 years.

The sampling frame to be used for the survey will be drawn from identified households/beneficiaries and institutions and staffs. Where information will be sought from the targeted Counties/district, three-stage sampling scheme will be used where the first stage will sample the sub-counties/sub-regions in the three countries During the second sampling will be done to select the cooperative societies, in the third sampling random sampling will be used for the households/high population stakeholder while purposive sampling will be used to select the organizations that will be interviewed in the respective regions/Counties. For beneficiaries, appropriate formulas will be used to select the sample size based on the population size, with the target samples being less than 50,000 this will involve finite populations. Based on the 2019 Kenya National Population and Housing Survey, we will use the list of the administrative villages to develop the baseline survey sampling framework for the study.

*Sample size:* The sample size will be determined by employing the standard sample size

<b>Task 2:</b>	<b>Development of Survey Tools and Data Collection</b>
----------------	--

equations. It is proposed that the sample size for the beneficiaries be determined using Feed the Future programmes recommended formula for beneficiary farmers (Stukel and Friedman G, 2016). The formula for calculating the initial sample size is given by:

$$\text{initial sample size} = n = \frac{N^2 \times Z^2 \times S^2}{MOE^2}$$

where:

- N = total number of beneficiary farmers
- z = critical value from Normal Probability Distribution
- s = standard deviation of the distribution of beneficiary data
- MOE = margin of error, a product of target indicator and acceptable percentage error

With the targeted beneficiaries being 27,000 (and factoring 40% for control) and critical value of 1.96 and target percentage error Of 0.05 and a standard deviation of 0.5 (from number of community and other participant using improved technologies and coding technologies adoption with 0 for No adoption and 1 for Yes and the two value being equally likely values for a given respondent to assume-Stukel and Friedman, 2016) and assuming enterprise as the farm and with target of 1 acre under coffee per farmer (27,000 acres for beneficiaries plus 40% for control) the total sample for treatment has initially been calculated as 384. The sample will be divided proportionately in the 3 countries based on number of beneficiaries in each Country. Adjustment will be made after discussion with client to take care of geographical divergence, groups diversity, gender consideration etc.

The initial sample size has been adjusted for anticipated individual non-response assuming a 95% response rate on the survey questions; giving a total sample size of 403 farmers. A control group of 40% will be adopted (Israel, 1992), imply 161 of interviewees for control and 242 as target beneficiaries. All the sample will be divided proportionately based on population in among the 4 areas

It is initially assumed that of the three Countries about 8 sub-Countries or cooperatives will be sampled, with average of about 30 respondents as beneficiaries' farmers and 20 as control; and two organizations being interviewed in each of these sub-Countries. Another about five stakeholders could be targeted in each the three countries; while not less 3 stakeholders in in near major towns/cities or national government headquarters. The numbers are guides for initial budgeting, and will be reviewed after detailed desktop study. However other factors will be considered when selecting the sample size such as; difference in organizations supporting the beneficiaries, geographical variations, enterprises being handled, and cultural and socio-economic diversity.

**1B: Task 3: Data Analysis**

<b>Task 3:</b>	<b>Data Analysis</b>
<p><b>Objective</b></p> <ol style="list-style-type: none"> <li>1. Production of data sets.</li> <li>2. Establish an understanding of the context within which the project interventions will be made.</li> </ol>	<p><b>Output</b></p> <ol style="list-style-type: none"> <li>1. Baseline Study Findings</li> </ol>

**Data Processing Analysis**

The electronic data from the field will be received at central command in an Excel format. Data collected will be cleaned and monitored as it streams in from the field. The collected data shall be enriched with data from development actors. The collated data shall be organized into Data Base



Task 3:	Data Analysis
<p>in Excel format and will be coded for ease of filtering and analysis. Information collected from Key informants, FGDs and Desk studies will be coded as per envisaged themes. This triangulation will make assessment findings clearer thereby enriching the reliability of data and information hence the report. Descriptive statistics will first be computed in order to give a clear overview of the data collected. This will be presented in form of mean values, mode and median. In addition, frequency tables will be used. For data analysis, SPSS version 21 statistical software will be used. Then tables on regression/ association results will also be presented. The regression output tables will entail the estimated coefficients of the model parameters, their respective standard errors, t-statistics, respective p-values and the respective confidence level values. Frequency tables and cross-tabulation table on the respective variables deemed to have some relationships of importance to the study will be presented as well. Upon establishing the various effects, discussion of the results will be done in an attempt to draw conclusions, and identify recommendations arising from the results of the data analysis.</p>	

### 1C: Quality Control Procedures

Quality control during the exercise shall be ensured through the following:

- 1) **Recruitment of qualified and competent personnel.** The team of personnel is highly qualified in the various aspects of the assignment. Local based clerks to support the team shall be meet critical criteria. This includes at least University degree with experience in data collection and entry. They shall have good communication skills and interpersonal skills.
- 2) **Training of personnel** – The clerks involved in the project shall be trained prior to deployment. Training shall cover purpose and objectives of the assignment, procedures for data collection, interview techniques, recording of responses and general conduct during the exercise
- 3) **Use of standard tools and forms for data collection.** The tools shall be as simple as possible with clear instructions. Questions shall be formulated in a simple language without ambiguity.
- 4) **Pre-testing of instruments/tools** to ensure that they can be used without difficulties
- 5) **Supervision of clerks** – The clerks shall be supervised during the exercise
- 6) **Checking of data** – Data shall be checked daily and any corrections made while in the field. The data sheets shall be checked for missing information, inconsistencies and legibility
- 7) **Supervision and counterchecking Data Entry:** -This shall be done in order to ensure that data captured is accurate. Standard format shall be designed for data capture and used. The entry format shall be pretested

### 1D: Task 4: Preparation of Baseline Study Report.

Task 4:	Preparation of Baseline Study Report
<p><b>Objective</b></p> <ol style="list-style-type: none"> <li>1. Compile all the data collected and prepare a Baseline Study Report.</li> </ol>	<p><b>Output</b></p> <ol style="list-style-type: none"> <li>1. Baseline Study Report</li> </ol>
<p><b>Activities:</b></p> <p><b>Activity 4.1: Analysis and Report Writing of Findings.</b></p> <p>The Consultant shall compile the collected and analyzed data and prepare a report on these findings after interpretation. This will facilitate a better understanding of correlating components and serve as the basis of the Baseline Survey Study Report.</p>	



**Task 4:****Preparation of Baseline Study Report****Activity 4.2: Submission of Draft Baseline Survey Study Report to the Client**

The Consultant Shall submit the Draft Baseline Survey Report to the Client for review and comments.

**Activity 4.3: Discussion of Draft Report with the stakeholders**

After submission of the Draft Report and acceptance by the client, the Consultant will present the draft report in stakeholder workshop for validation.

**Activity 4.4: Final Baseline Survey Report.**

The Consultant will incorporate the comments and input from the Stakeholders to prepare the Final Report which will be submitted to the client.



ACT!/ DFID	<b>Associate Consultant:</b> Consultancy services to conduct a study to ascertain the state of climate change and environment in ASAL of Northern Kenya.	N.E Counties. Sept 2017-Feb 2018
FAO/ GAFSP/ AfDB	<b>Individual Consultant:</b> Capacity Need Assessment (CNA) for the Small Holder Irrigation and Value addition Project (SIVAP); with 11 irrigation projects	11 Counties in Kenya June – July, 2017
MESPT/DANIDA	<b>Associate Consultant:</b> Market assessment and value chain analysis for export vegetables in Embu, Nyeri, Kirinyaga and Meru Counties	Nyeri Meru, Embu, Kirinyaga. Dec 2016-Jan 2017
“	<b>Associate Consultant:</b> Documentation and sharing of achievements and lessons learnt from the mango value chain intervention in Makueni and Kitui	Kitui Machakos Makueni. Dec 2016
“	<b>Associate Consultant:</b> Documentation and sharing of achievements and lessons learnt from the export vegetables value chain intervention in Makueni And Kitui Counties	Kitui Machakos Makueni. Dec 2016
Solidaridad/BCI/Liberty	<b>Lead Consultant.</b> End of Project Evaluation of The Solidaridad's Farmer Support Program on BCI Cotton- Kenya 2013 – 2015	Keiyo/Baringo, Mar-April 2016.
Acts/Sida	<b>Associate Consultant.</b> End of Project Evaluation-Act Change Transform (Act!) for Review of the CRM one-year CRM Cost Extension and Land Facility. Evaluation of 20 cost extension partners and 8 Land facility partners	Many parts of Kenya February-Mar, 2016
Associate Consultant Act!/SIDA	<b>Associate Consultant.</b> Meta Evaluation of Changieni Rasili Mali (CRM) Facility on Natural Resource Management. Evaluation of 81 evaluations to filter outcomes, critique evaluation process, draw lessons learnt and best practices, and draw recommendations	Nairobi, Kenya, Sept-Nov 2015
Associate Consultant/Solidaridad	<b>Associate Consultant:</b> End of Project Evaluation of the Dutch Government Supported Horticultural and Food Security Project (Solidaridad/HIVOS/SNV)	5 Provinces In Kenya. April-May, 2015
MOA	<b>Associate Consultant:</b> Technical quality assurance engineer and economist for feasibility studies, detailed design and preparation of tender documents for irrigation Development Projects: Rubiru, Wamba etc.	Different areas of Kenya (2014-2015)
EU/ CDTF	<b>Associate Consultant:</b> Mid-Term Review of EU funded Community Development program (CDP-4) with 274 projects; focus: education, health, water & sanitation, agriculture, rural access infrastructure, and livestock sectors	Most Counties in Kenya Sep-Oct 2014
DAI, USAID	<b>Individual Consultant:</b> Business Analyst and Engineer: Development of agro-processing business cases, Infrastructure (buildings) design and technology selection, specifications, business evaluation and guidance and support to three medium- sized business startup companies ( <i>Mini refinery, Cereal processing plant and an oil factory</i> )	Hargeisa, Somaliland, Dec 2014-Aug 2015
Othaya Cooperative	<b>Lead Consultant:</b> Detailed Design and Preparation of tender documents for construction of Kagunduini Coffee Factory of Othaya Cooperative Society	Othaya, Kenya July-Aug 2014
FAO	<b>Individual Consultant:</b> Agribusiness Analyst and Trainer-Mid-term evaluation of the project support to SMAEs. Trainer: SMAEs and Agribusiness staffs on business appraisal and business planning	Scattered sites in Kenya. 2012 to 2014.
JKUAT/Min Energy	<b>Key Trainer:</b> Economic Evaluation of Energy projects	Ministry of Energy HQ staff. (2012-2013)
SNV, HIVOS & SOLIDARIDAD	<b>Assistant consultant:</b> Impact Assessment of Fair and Responsible Trade in Coffee	Central Kenya, Feb-April, 2013
“	<b>Assistant consultant:</b> Baseline survey- Introduction of	Narok and Bomet districts,

	avocado to small scale farmers	July-Aug 2012
“	<b>Assistant consultant:</b> Establishing Farmer Business groups for horticulture	Central Kenya, 2012
JKUAT/GDC	<b>Associate Consultant:</b> Environmental and Social Impact Assessment Study; Geothermal Development Company warehouse	Nakuru, Kenya, June-July 2013

### **C-2: General Assignments**

Ministry of Agriculture/SIDA	<b>Engineer:</b> Design, development, promotion and Supervision of construction of Rural Structures-Animal housing structure, grain storage structures and processing infrastructure under SIDA project and Ministry	All parts Kenya (1988-2011)
Ministry of Agriculture/World Bank	<b>Engineer:</b> Design, development and Promoting of machinery for agricultural and livestock production under World bank project- Farm Equipment Use for Small Holder Agriculture (FEUSHA) Project, and Ministry of Agriculture	All parts Kenya (1990-1993)
Min of Agric/ JICA	<b>Engineer:</b> Kenya's Rice and Cotton Value Chain Study: Team Member, Engineer & Economic analyst (of Data Using VCA software)	Rice areas, Kenya (2005)
SHDP-ADB, FAO etc.	<b>Individual Consultant:</b> Selection and recommendation of technologies for agro-processing businesses under different projects	7 irrigation projects in Kenya, and other parts of Kenya (1988-date)
Min of Agric/JICA	Project officer in the Ministry: Africa Asia Knowledge Co Creation Project -JICA funded	Nairobi, Kenya (2005)

### **D) SELECTED TRAININGS**

<b><u>Trainer/ Sponsor</u></b>	<b><u>Name of Training and Duration</u></b>	<b><u>Dates/Location</u></b>
USAID & HORT CRSP	Post-Harvest Training of Trainers Program; for Sub Saharan Africa. Spread in 1-year, final training 1 week	2010-2012. Final - Arusha, Tanzania
FAO	Ex-ante Policy Analysis Using the Value Chain Approach (& VCA Software) –spread in 2 years, final training-2 weeks	(2008-2010) Nairobi Kenya
JICA	Post-Harvest Engineering and Technology -1 month	November (2002), Bogor, Indonesia
JICA/THAILAND	Agro-Processing/Agro-industries in Thailand: a Study Tour on Thailand's Agricultural and livestock products Processing and Other Off Farm Enterprises 2 weeks.	2005.-Thailand
ACTS	Innovative Systems: Research into Use-1 week	2006-Nairobi
Ministry of Agriculture	-Crop Storage and Management Course-3 Months -Animal Housing structures Course-1 month -Participatory Rural Appraisal (PRA) Techniques-1 Week -Integrating Gender into Agriculture-1 week	1991: Nairobi 1990: Nairobi 1994, Nyahururu 2003, Thika

### **E) EMPLOYMENT RECORD SUMMARY**

<b><u>Organization</u></b>	<b><u>Title, positions and responsibilities</u></b>	<b><u>Dates and Locations</u></b>
Jomo Kenyatta University	Lecturer: Energy and Environmental Economics, Engineering Economics (Economic/Financial Evaluation of Engineering projects), Renewable Energy, Project Management, Entrepreneurship, General Economics, Animal and Agricultural Structures and Equipment, Post-Harvest Theory & Technologies;	2011 to date, Juja-Kenya
Ministry of Agriculture	<b>Agro-processing &amp; Post-Harvest Technology and On farm structures Engineer;</b> Supervision of construction and installation of Agro and post-harvest systems, water tanks and animal housing units/buildings,	1988-2011 Nakuru,

warehouse/storage structures, hermetic storage systems, potato stores, Ruiru and greenhouse dryers, processing building, biogas etc.; including through a SIDA Nairobi in project (2003-2011; design, training on systems, processes and technologies, Kenya

**Agro-Industry & Investment Promotion Officer:** constraints and opportunities identification, baseline surveys, feasibility studies, monitoring and evaluation, value chain studies, backstopping over 200 enterprise, training players in agro-industry on entrepreneurship and systems, supporting investment in agro-processing and post-harvest activities in Kenya, participation in policy and strategies development.. **Design and Promotion Engineer:** Design, testing and promotion of varied engineering technologies and systems; on mechanization, post-harvest, energy, storage and agro-structure

**General Relevant Duties undertaken: Ministry of Agriculture and JKUAT**

**Responsibilities:** JKUAT- Researcher. Ministry of Agriculture-Agro-processing, Post-Harvest and Mechanization Engineer. Agro-industry Promotion Engineer. (Different parts of Kenya)

- Vegetable value chain analysis and identification of practices, technologies constraints, opportunities and losses in post-harvest, agro-processing and renewable energy for farmers in Kisii, Kakamega, Kirinyaga and Kiambu under RE4Food project (2015-2017)
- Participation in the development of the Ministry of Agriculture's Draft Agribusiness strategic plan, and Team member Agro-industry stakeholders committee to identify strategic issues on Agro-industry for policy development (2013)
- Sitting in inter-ministerial committees on preparation of Mechanization and Agro-industry policies and guidelines for implementation by the National Economic Council (2005-2011)
- Baseline surveys for constraints and opportunities identification for policy development for Agro-enterprises engaged in mechanization, processing/post-harvest (e.g. storage), agro-infrastructure, renewable etc. in Kenya. *Over 400 Enterprises surveyed and backstopped –(2005-2011)*
- Committee member, National Biogas Steering Committee. Ministry of Agriculture representative (1 year)-2010-2011
- Participant in Developing Countries 1-week Experience sharing workshop on Post-Harvest. At Arusha-Tanzania. (2012).
- Development of Evaluation guidelines and selection of technologies on Mechanization and Agro products value addition; (2011)
- Development of Fruit, Vegetable and Soya processing extension Manual (2006).
- Team Member, Development of Ministry of Agriculture- Kenya (2008): Gender strategy (2008)
- Review of manual for East and S. African region on Mechanization and postharvest/processing of cereals and legumes at the village and farm level-Lusaka Zambia through UNDP/ AGROTEC. (1994)
- Capacity building different players on Post-harvest: agro-processing and agro-structures, hermetic storage, on farm storage of grain, legumes potatoes etc. Also, on animal housing, business setup and management etc. (1988-2013)
- Identification, sourcing and documenting Mechanization, Post-harvest equipment/machinery and processes. *Several equipment and processes identified and document from Kenya and from other countries for diverse commodities/enterprises (1988-2015)*
- Development, testing and promotion of on farm structures; potato stores, grain stores, animal housing, water tanks etc. through SIDA funded project. *(1988-1992)*
- Organizing stakeholders forums and developing linkages with regulatory agencies on quality and standards in mechanization, post-harvest/processing (2005-2011)
- In charge of organizing Ministry of Agriculture's Trade Fair and Agricultural Shows section on Mechanization, Post-harvest/Agro-processing and Standards (for eight years) (2003-2010)
- Machinery and Equipment testing. *Tested variety of equipment; rice hullers, maize shellers, Peanut butter machines, oil press (manual and electric), tractors milk pasteurizers, Hippo pump, etc. (1988-2005)*
- Chairing technical committee on purchase of farm machinery and equipment for Jomo Kenyatta University (tractors, ploughs, forage harvester): (2013) **and** Engineer Ministry of Agriculture technical committee on purchase of mobile dryers for use in 25 districts (2010).

- Participating in the development and review of National Agriculture Mechanization Strategy (NAMS) - 1992 and 2010
- Training and guiding over 60 engineers on design and adherence to standard in development of technologies and systems for Professional Registration (2009).
- Testing, field demonstration and documentation of a number of mechanization and Agro and post-harvest technologies and processes for diverse commodities
- Supervision of construction and installation of Agro and post-harvest systems; *Agro-processing processing units/buildings, storage structures e.g. hermetic storage systems, potato stores, greenhouse dryers, processing building, biogas etc.; including through a SIDA project (2003-2011)*
- Evaluation of Agro-Processing and Value addition fund seeking proposals
- Feasibility studies development e.g: *Avocado processing plant, Fruit Processing Factory (Kwale), Mango Processing Plants (KENFAP), Banana flour processing (Meru)*
- Institutional Project Proposal development e.g: *Up scaling Agro-Processing in Kenya (Proposal to JICA); Integrated Post-Harvest and Technology Development (proposal to GoK).*
- Trainer- Economics Evaluation of engineering Projects and Project Management to Ministry of Energy staff through (JKUAT scheduled trainings; 2010-2012).
- Design, development and Promoting of machinery for agricultural and livestock production; through e.g. World bank FEUSHA project, and through Ministry of Agriculture; including postharvest and mechanization equipment e.g. *design of Warehouse for Tharaka Community, greenhouse dryer (e.g. of Rwika), Coconut grater, etc.*
- Selection and recommendation of technologies for post-harvest and agro-processing businesses under different projects: SHDP, JICA, FAO etc.
- Part time Lecturer- Financial Management (for Postgraduate Diploma Students)

## **F) RESEARCH AND PUBLICATIONS**

### **F-1: Relevant Research Experiences**

- *Researcher:* An integrated agri-energy system for sustainable banana farming for improved livelihoods of s/holder farmers in Kenya; KARLO/World bank. (2019-2021)
- *Research Assistant:* The development and demonstration of a unique low-cost scalable PV technology for international development. Funded by Engineering and Physical Sciences Research Council EPSRC/, UKAID/New castle. (2019-2020)
- *Researcher:* Renewable Energy for Food project (RE4Food). JKUAT and Newcastle University (2012-2017).
- *Principal Investigator.* Greenhouse solar dryer system with convection system option. Funded by NACOSTI (2016 to date).

### **F-2: Publications**

- Design and Performance Evaluation of an Improved Solar-Biomass Greenhouse Dryer for Drying of Selected Crops in Western Kenya. 2020. CIGR Journal Vol. 22, No. 3
- Effectiveness of an evaporative charcoal cooler for the postharvest preservation of tomatoes and kales. Research in Agricultural Engineering. 2020. 66: 66-71.
- Analysis of Millers in Kenya's Rice Value Chain. IOSR Journal of Agriculture and Veterinary Sciences (IOSR-JAVS) (2019).
- Performance evaluation of an evaporative charcoal cooler and its effects on quality of leafy vegetables (2018). *Journal of Postharvest Technology* 2018, 06(3): 60-69
- Analysis of Designs and Performance of Existing Greenhouse Solar Dryers in Kenya: 2018. *Journal of Postharvest Technology* 2018, 06(1): 27-35
- Financial Benchmarking of Small and Medium Agro-Processing and Value Addition Agribusiness Enterprises in Kenya. 2017. *JSRM* Vol. 09: 7112-71182017
- Determinants of post-harvest losses among high moisture content vegetables traders in Kenya 2016. *Journal of Postharvest Technology* 2017, 05(2): 37-46
- Energy Efficient Rural Food Processing Utilising Renewable Energy to Improve Rural Livelihoods in Kenya. 2017. [http://www.jkuat.ac.ke/departments/abed/wp-content/uploads/2017/09/RE4Food\\_Report\\_jkuat.pdf](http://www.jkuat.ac.ke/departments/abed/wp-content/uploads/2017/09/RE4Food_Report_jkuat.pdf)
- The effects of coffee certification in Kenya. Chapter in Coffee certification in East Africa: impact on farms, families and cooperatives. Pages: 83 – 126. 2014. [https://doi.org/10.3920/978-90-8686-805-6\\_3](https://doi.org/10.3920/978-90-8686-805-6_3)
- The ambivalent impact of coffee certification on farmers' welfare: a matched panel approach for cooperatives in Central Kenya. 2016. World Development. 2016. Vol 77: 277-292
- A Technology Transfer Model for Renewable Energy Agro-processing technologies (2017). <http://sri.jkuat.ac.ke/ojs/index.php/proceedings/article/view/460/324>

- A Technology Transfer Model for Renewable Energy Based Agro-processing Technologies. Global Scientific Journal. 2019. Vol., Issue 5
- The Rice Value Chain in Kenya With Reference to Rice Producers. Paper presented in the 12th *KARI Biennial Scientific Conference*, KARI, Kenya, 2010. <http://knowledge.cta.int/en/Dossiers/Commodities/Rethinking-the-rice-value-chain/Relevant-publications/The-rice-value-chain-in-Kenya-with-reference-to-rice-producers>
- Fruits, Vegetables and Soya Bean Processing. A Ministry of Agriculture Extension Manual-(2007)

### **F-3: sample Proposals, Concepts Notes and Write-ups developed**

- An integrated agri-energy system for sustainable banana farming for improved livelihoods of s/holder farmers in Kenya; KARLO/World bank. (2019-2021)- *Research proposal (2020); Funded-KES 14 million*
- Characterization and Analysis of Solar Dryers; a study of solar dryers in Central and Eastern Kenya region: *Research findings survey report (2016)*
- Design, Performance testing of a Greenhouse solar dryer system with convection system option-*Proposal written and funded (Kshs 6 million) by NACOSTI Funding (2012)*
- Establishment of Mango Processing Plants: A Study to Establish Key Aspects and feasibility of Setting up a Mango Processing Plant through KENFAP *Feasibility study (2006)*.
- Post-Harvest Food Chain Loses, And Current Energy Demand for High Moisture Content Vegetables in Kenya -*Market Survey Report (2015)*
- Post-Harvest Food Chain Loses, Wastage and Current Energy Demand for High Moisture Content Vegetables in Kenya (2015). *Farmer Survey report (2015)*
- Design of A Postharvest Training Services Center (PTSC) In Kenya: Submitted during USAID-HORT CRSP Postharvest ToT Program (2012). *Proposal development (2012)*
- Stimulating Employment for the Youths through Agribusiness, Horticulture and Agro-Processing Infrastructure-for Economic Stimulus. *Proposal for Government of Kenya Funding (2009)*
- Reduction of Post-Harvest Losses and Up Scaling Agro-processing through Integrated Post Harvest Technology Development. *Proposal to Government of Kenya-(2008)*.
- Status of Agro-processing in Kenya-A survey of diverse enterprises: fruits and vegetables, roots and tubers, cereals and legumes, oils and nuts and emerging crops. *Survey report, (2005-2007)*
- Report on constraints and opportunities on roots Crops production and processing in Coast and Rift Valley Province- *a Survey Report. Ministry of Agriculture (2008)*
- Up scaling Agro-Processing in Kenya. *Proposal to JICA (2007)*
- Gender Sensitive Agricultural Engineering Technologies: *Article GEMS magazine, Ministry of Agriculture (2002)*

### **Consultancy work References**

1. Sarah Maiyo. Welthungerhilfe. [sarah.maiyo@welthungerhilfe.de](mailto:sarah.maiyo@welthungerhilfe.de) Tel. +254-720771158
2. Leah Mutinda. Fairtrade Africa [lmutinda@fairtradeafrica.net](mailto:lmutinda@fairtradeafrica.net) Tel. +254-712009616
3. FAO: Elizabeth Kamau-Agribusiness Officer: [Elizabeth.Kamau@fao.org](mailto:Elizabeth.Kamau@fao.org) Tel: 254-722892505
4. MESPT: Joyce Kituva-Business Development Officer: [kituvak@yahoo.com](mailto:kituvak@yahoo.com) Tel. 254 724 505577/720-915466
5. ACTS! Michael Karanja-Monitoring and Evaluation Manager: [michael.karanja@act.or.ke](mailto:michael.karanja@act.or.ke) Tel 254-20-8179231/40

### **Employment References:**

1. Jomo Kenyatta Univ of Agric &Tech: Dr/Eng. Raude Messo. Email: [ramesso@jkuat.ac.ke](mailto:ramesso@jkuat.ac.ke). Tel 254-722617042
2. State Department of Agriculture: Michael M Kamwere: [kamwere2006@yahoo.com](mailto:kamwere2006@yahoo.com) Tel. 254-722621042
3. AGRIBASE Consultants: Godfrey Ndirangu: Email: [gmndirangu@gmail.com](mailto:gmndirangu@gmail.com). Tel.254-722892510
4. AFREDEC Consultants. Joel Maina. [joel.maina@afredec.com](mailto:joel.maina@afredec.com) Tel. +254-721650460

### **CERTIFICATION:**

I, the undersigned, certify that to the best of my knowledge and belief, these data correctly describe my qualifications, my experience, and me.



Date: **16<sup>th</sup> February, 2021**





## Godfrey M Ndirangu

---

### **Key Qualifications:**

Godfrey Ndirangu has 25 years' experience working with community. He is an expert in Value chain analysis, Financial and Economic analysis, Project appraisals, Proposal Development, monitoring and evaluation, Networking and collaboration linkage in PPP. He holds a MSc and BSc in Agricultural Economics from Egerton University.

He has over the years conducted baseline surveys, pertaining irrigated agriculture, and food security. He has done at National Level, Training of Trainers of Full Proposal development for communities under Community Development Initiatives (CDI) under CDTF (EU Program). Training of Trainers on community social mapping and PADev tools.

Ndirangu has worked with the Ministry of Agriculture for 14 years and National Irrigation Board for two years. He has coordinated various marketing studies and value chain analysis. He has also worked as Agro-Economist and Agri-business expert for various projects. During his work in the Ministry of Agriculture and National Irrigation Board, he trained farmers on appropriated farming techniques, and agricultural value chain development. He also mobilized farmers in Bura and Hola Irrigation scheme to grow sorghum for EABL under contract farming.

---

### **1. Education:**

- Masters of Science (Agricultural Economics), Egerton University, Kenya
- Bachelor of Science (Agricultural Economics), Egerton University, Kenya

---

### **2. Membership of Professional Societies:**

- Member – Kenya Society for Agricultural Professionals (KESAP)

---

### **3. Other Trainings:**

---

### **4. Countries of Work Experience:** Kenya, Tanzania, Uganda,

---

### **5. Employment Record:**

#### **From 2009 to Current**

**Employer** : Agribase Consultants  
**Positions Held** : Managing Director, Agribase Consultants.

#### **From 2012 to 2014**

**Employer** : Agricom Consultants Ltd.  
**Positions Held** : Director/Project Manager/ Agricultural Economist/Researcher

#### **From 1997- 2010**

**Employer** : Ministry of Agriculture  
**Positions Held** : Worked with the Ministry of Agriculture as a Division extension Officer and District Agribusiness Development Officer in both Semi -arid districts and high potential districts

---

### **6. Work Undertaken that Best Illustrates Capability to Handle the Tasks Assigned**

**Name of assignment or Project:** Consulting Services to carry out Community Proposal Appraisal, Monitoring and Evaluation (Both Desk and Field)

**Year:** 2018

**Location:** Kenya, Embu, Meru, Nyeri, Tharaka Nithi, Murang'a, Kirinyaga Counties

**Client:** UTaNRMP/Agricom Consultants Ltd

**Main project features:**

Consulting Services to carry out Community Proposal Appraisal, Monitoring and Evaluation (Both Desk and Field).

**Position held:** Deputy Project Director:

**Activities performed:**

- Reviewing policy framework and other relevant projects;
- Overseeing Desk review and field verification and appraisals;
- Overseeing Advise on natural resources management issues;
- Client Liasion;
- Overseeing Report Writing.

6. Work Undertaken that Best Illustrates Capability to Handle the Tasks Assigned
<p><b>Name of assignment or Project:</b> Consultancy services on Market Assessment And Value Chain Analysis For Export Vegetables In Embu, Nyeri, Kirinyaga And Meru Counties  <b>Year:</b> 2016  <b>Location:</b> Kenya, Embu, Nyeri, Kirinyaga and Meru Counties  <b>Client:</b> Micro Enterprise Support Programme Trust (MESPT ) funded by DANIDA  <b>Main project features:</b> The project involved conducting a market assessment and value chain analysis for export vegetables in Embu, Nyeri, Kirinyaga and Meru Counties so as to assist the farmers supported by MESPT in accessing markets for their vegetables. This will assist in poverty alleviation and boost farmers' incomes  <b>Position held:</b> Team Leader/Agro Economist  <b>Activities performed:</b>  <i>Review of relevant literature; Stakeholder analysis; Development of a research plan; Design of data collection tools; Data collection, entry and analysis; Report writing; Presentation of key findings to stakeholders</i></p>
<p><b>Name of assignment or Project:</b> Documentation and sharing of achievements and lessons learnt from the mango and export vegetables value chain intervention in Makueni and Kitui  <b>Year:</b> 2016  <b>Location:</b> Kenya, Makueni and Kitui Counties  <b>Client:</b> Micro Enterprise Support Programme Trust (MESPT ) funded by DANIDA  <b>Main project features:</b> The project involved documenting past interventions on export vegetables and mango value chains undertaken by MESPT through the BSPS 11in Makueni and Kitui Counties between 2011-2016 and the results achieved as well as documenting the lessons learnt in each intervention and enumerating best practices that can be replicated to other areas.  <b>Position held:</b> Team Leader/Agro Economist  <b>Activities performed:</b>  <i>Review of relevant literature; Stakeholder analysis; Development of a research plan; Design of data collection tools; Data collection, entry and analysis; Report writing; Presentation of key findings to stakeholders</i></p>
<p><b>Name of assignment or Project:</b> CRM Project 2012-2015 End Term Evaluation Report-Review of the CRM One-Year CRM Land Facility  <b>Year:</b> 2016  <b>Location:</b> Kenya  <b>Client:</b> ACT Change Transformation (Act)  <b>Main project features:</b> Act! was implementing the Changieni Rasili Mali (CRM) Facility; a five-year program (2011-2016) funded by the Government of Sweden and the Department for International Development (Dfid) under the ENRM Program. The Facility contributed greatly to an improved citizens' participation in governance and management of natural resources in Kenya. Programming under the Facility focused on six thematic areas namely: Agriculture, Climate Change, Environment, Energy, Water and Land. The above consultancy service was to filter the lessons learnt from the Changieni Rasili Mali (CRM) Facility.  <b>Position held:</b> Team Leader/Agro Economist  <b>Activities performed:</b>  <i>Coordination; Design data collection tools; primary data collection; Documentary reviews; Data analysis; Report writing; presentation of findings to stakeholders</i></p>
<p><b>Name of assignment or Project:</b> Meta Evaluation/Technical Assistance to Act Change Transforms (Act!) for Filtering Learning on CRM <b>Year:</b> 2016  <b>Location:</b> Kenya  <b>Client:</b> ACT Change Transformation (Act)  <b>Main project features:</b> Act! was implementing the Changieni Rasili Mali (CRM) Facility; a five-year program (2011-2016) funded by the Government of Sweden and the Department for International Development (Dfid) under the ENRM Program. The Facility contributed greatly to an improved citizens' participation in governance and management of natural resources in Kenya. Programming under the Facility focused on six thematic areas namely: Agriculture, Climate Change, Environment, Energy, Water and Land. The above consultancy service was to evaluate the land thematic area that was implemented between the years 2012 and 2015.  <b>Position held:</b> Team Leader/Agro Economist  <b>Activities performed:</b>  <i>A deep analysis of 82 evaluation reports to filter learning for the CRM facility; Report writing; Presentation of key findings to stakeholders</i></p>
<p><b>Name of assignment or Project:</b> End Term Evaluation for the Horticulture And Food Security Project (HFSP) Security Project (HFSP) Food Security Project (HFSP) on CRM <b>Year:</b> 2016</p>

## 6. Work Undertaken that Best Illustrates Capability to Handle the Tasks Assigned

**Location:** Kenya

**Client:** Solidaridad Eastern and Central Africa Expertise Centre(SECAEC)

**Main project features:** Solidaridad Eastern and Central Africa Expertise Centre(SECAEC) is a center established to assist smallholder farmers to produce commodities in an economical, environmental and socially sustainable manner that ensures good market access and improved prices for better quality of life. The project evaluation was meant to carry out an impact assessment on the horticulture and food security project for all the business cases throughout the country.

**Position held:** Team Leader/Agro Economist

**Activities performed:**

*Review of relevant literature; Stakeholder analysis; Development of a research plan; Design of data collection tools; Data collection, and analysis; Report writing; Presentation of key findings to stakeholders*

**Name of assignment or Project:** Midterm Evaluation of Community Development Trust Fund projects

**Year:** 2015/16


**Location:** Kenya


**Client:** EUROPEAN UNION/DANIDA/CDTF


**Main project features:** The mid-term evaluation (MTR) of involved assessment of the degree of implementation per sub-component against the set targets for the period 2011-2014. The evaluation was on relevance, efficiency, effectiveness, stakeholder involvement, sustainability, lessons learnt, best practices.


**Position held:** Project Director/Economist


**Activities performed:**

 *Coordinating the whole exercise*

 *Desk study;*

 *Field missions;*

 *Report writing; and*

 *Presentation of the draft report in stakeholder workshop before finalizing the report.*

**Name of assignment or Project:** Consulting Services to carry out Community Proposal Appraisal, Monitoring and Evaluation (Both Desk and Field).

**Year:** 2014

**Location:** Kenya, Embu, Meru, Nyeri, Tharaka Nithi, Murang'a, Kirinyaga Counties

**Client:** UTaNRMP/Agricom Consultants Ltd

**Main project features:**

Consulting Services to carry out Community Proposal Appraisal, Monitoring and Evaluation (Both Desk and Field).

**Position held:** Deputy Project Director:

**Activities performed:**

- Reviewing policy framework and other relevant projects;
- Overseeing Desk review and field verification and appraisals;
- Overseeing Advise on natural resources management issues;
- Client Liasion;
- Overseeing Report Writing.

**Name of assignment or project:** Study on Opportunities and Threats of Irrigation Development in Kenya's Drylands (Arid Lands).

**Year:** 2013

**Location:** Kenya

**Client:** FAO-Kenya

**Main project features:** The project involved identifying opportunities and threats of irrigation development in Arid Areas in Kenya.

**Positions held:** Agro- Economist

**Activities performed:**

- Desk study;
- Field missions.

**Name of assignment or Project:** Provision of Technical Support for Verification of Concept Notes and Field Verification of Applications for Funding and Support for Full Proposal Development Under Community Development Initiatives (CDI), Call For Proposals 2011 Funded By (EU and DANIDA through the Community Development Trust Fund.

**Year:** 2011-2012

**Location:** Kenya- Countrywide

**Client:** Community Development Trust Fund (Supported by EU/ DANIDA)/Agricom Consultants Ltd

**Position held:** Deputy Team Leader/Economist

## 6. Work Undertaken that Best Illustrates Capability to Handle the Tasks Assigned

### Activities performed:

- Desk and Field Assessment of concept notes (undertook facilitation and quality control of a team of consultants undertaking the exercise)
- Supported communities in development of full proposals for possible funding under EU,
- Assist Team Leader in project coordination.

**Name of assignment or Project:** Consulting Services on Rapid Baseline Survey for the Regional Pastoral Livelihoods Resilience Program (RPLRP)

**Year:** 2013

**Location:** ASAL Counties in Kenya

**Client:** Ministry of Agriculture, Livestock and Fisheries/ Agricom Consultants Ltd

**Main project features:** Rapid Baseline Survey for the Regional Pastoral Livelihoods Resilience Program (RPLRP)

**Position held:** Team leader

### Activities performed:

- Reviewing policy framework and other relevant projects;
- Conduct interview and analyze data;
- To identify existing proxy indicators/data to the results framework indicators;
- Data analysis;
- Report writing and presentation of findings.

**Name of assignment or Project:** Feasibility Study, Detailed Design and Preparation of Tender Documents for Burangi Irrigation Project.

**Year:** 2013

**Location:** Kilifi County

**Client:** National Irrigation Board/ Agricom Consultants Ltd

**Main project features:** Feasibility Study, Detailed Design and Preparation of Tender Documents for Burangi Irrigation Project.

**Position held:** Agro-economist

### Activities performed:

- Reviewing policy framework and other relevant projects;
- Agro-socio-economic baseline survey;
- Financial and economic analysis;
- Report writing and presentation of findings.

**Name of assignment or Project:** Project Evaluation and Conducting Baseline Survey for Maize Mechanization programme.

**Year:** 2013

**Location:** Countrywide

**Client:** Ministry of Agriculture, Livestock and Fisheries/ Agricom Consultants Ltd

**Main project features:** Conducting Baseline Survey for Maize Mechanization programme

**Position held:** Research Consultant:

### Activities performed:

- Reviewing policy framework and other relevant projects;
- Agro-socio-economic baseline survey;
- Data analysis;
- Report writing and presentation of findings.

**Name of assignment or Project:** Feasibility Study, Detailed Design and Preparation of Tender Documents for Samburu Clusters Irrigation Project.

**Year:** 2013

**Location:** Samburu County

**Client:** National Irrigation Board/ Agricom Consultants Ltd

### Main project features:

Feasibility Study, Detailed Design and Preparation of Tender Documents for Samburu Clusters Irrigation Project

**Position held:** Agro-economist:

### Activities performed:

- Reviewing policy framework and other relevant projects;
- Agro-socio-economic baseline survey;
- Financial and economic analysis+;
- Report writing and presentation of findings.

**Name of assignment or Project:** Project Evaluation and Conducting Baseline Survey for African

## 6. Work Undertaken that Best Illustrates Capability to Handle the Tasks Assigned

Agricultural Capital Fund for Biyinzika Enterprises Limited farmers in Uganda.

**Year:** 2013

**Location:** Uganda, Countrywide

**Client:** Royal Tropical Institute/Gatsby Foundation.

**Main project features:** Baseline Survey for African Agricultural Capital Fund for Biyinzika Enterprises Limited farmers in Uganda

**Position held:** Team Leader:

**Activities performed:**

- Reviewing policy framework and other relevant projects;
- Oversee data collection and analysis;
- Report writing and presentation of findings.

**Name of assignment or Project:** Rice Producer Baseline Survey/Evaluation in Tanzania

**Year:** 2013

**Location:** Tanzania, Countrywide

**Client:** Royal Tropical Institute/Gatsby Foundation.

**Main project features:** Baseline Survey for Rice producers in Tanzania

**Position held:** Team Leader:

**Activities performed:**

- Reviewing policy framework and other relevant projects;
- Oversee data collection and analysis;
- Report writing and presentation of findings.

**Name of assignment or Project:** Consultancy services for Gatsby/ BMGF impact assessment of investment.

**Year:** 2013

**Location:** Kenya, Nyandarua and Kiambu Counties

**Client:** Royal Tropical Institute/Gatsby Foundation.

**Main project features:** Baseline survey for farmers growing potatoes and contracted by Midland Company Ltd and for farmers growing cutflowers and contracted by Wilmar Company Ltd. Midland Company Ltd and Wilmar Company Ltd had been funded by Gatsby and BMGF to expand the capacity of potatoes processing and to expand the capacity of buying cutflowers from farmers respectively.

**Position held:** Team Leader:

**Activities performed:**

- Reviewing policy framework and other relevant projects;
- Oversee data collection and analysis;
- Report writing and presentation of findings.

**Name of assignment or Project:** Feasibility Study and Detailed Design for Kagongo-Wendani Irrigation Scheme.

**Year:** 2013

**Location:** Nyandarua County

**Client:** Ministry of Agriculture, Livestock and Fisheries.

**Main project features:**

Conducting socio-economic and agro-economic baseline survey during the feasibility study for Kagongo Wendani Irrigation Development.

**Position held:** Agro-economist

**Activities performed:**

- Reviewing policy framework and other relevant projects;
- Agro-socio-economic baseline survey;
- Financial and economic analysis;
- Report writing and presentation of findings.

**Name of assignment or Project:** Consultancy services on Lower Nzoia Irrigation Development Project Appraisal

**Year:** 2012

**Location:** National Irrigation Board funded by World Bank

**Client:** Ministry of Agriculture, Livestock and Fisheries.

**Main project features:**

Conducting socio-economic and agro-economic baseline survey during the review of the feasibility study for Lower Nzoia Irrigation Development Project

**Position held:** Team Leader Household and Marketing survey

**Activities performed:**

- Reviewing policy framework and other relevant projects;

**6. Work Undertaken that Best Illustrates Capability to Handle the Tasks Assigned**

- Agro-socio-economic and marketing baseline survey;
- Financial and economic analysis;
- Report writing and presentation of findings.

**Certification:**

I, the undersigned, certify that these data correctly describe me, and my experience.

Godfrey Ndirangu



Date: 4 November, 2019

**JORAM MUCHANGI GICHERU**  
**CURRICULUM VITAE**  
P.O Box 1208 – 00618 Nairobi, Kenya  
Phone: +254 (0) 721 952 734  
Email: [jmgicheru@gmail.com](mailto:jmgicheru@gmail.com)

**PERSONAL**    **Name:** Joram Muchangi Gicheru  
**Date of Birth:** October 16<sup>th</sup>, 1963

**OBJECTIVE**    To use my knowledge in agriculture, saccos and co-operative and public to catalyze capacity building and transformation of people and communities; especially those at the bottom of the pyramid - smallholder farmers, women, youth and the rural populations to become economically empowered and active change partners in the reduction of poverty.

**SUMMARY EXPERIENCE DESCRIPTION**    Over 30 years of hands on experience in agriculture, co-operative & saccos and rural development (including the coffee sector), agricultural value chain and value chain design, agriculture, co-operative development, rural development; policy analysis, formulation and strategy development; programme design, appraisal, management and evaluation; public performance management, and financial and economic analysis of projects and programs; agricultural/policy issues, sector planning and project analysis within the agricultural and rural development sectors.

I have experience in rural finance development issues as programme manager at the Agricultural Sector Coordination Unit (ASCU) responsible for agricultural and rural financial Services in the agricultural sector.

I was Team Leader - Development of Islamic-Finance compliant cooperative by – laws in order for Kenyans of Islam Faith to participate in Saccos and co-operative societies (this targeted also the coffee sector).

I was Team Leader – Development of a Technical Cooperation Programme for capacity building of Saccos between the Food and Agriculture and Organization (FAO) and the Ministry of Co-operative Development & Marketing.

I was Team Leader in capacity building and revitalization of co-operative societies and Saccos in Coast and Nyanza provinces.

As a consultant I have expertise and experiences in rural finance especially in Saccos. I have worked capacity building of Saccos to improve product development and supporting the Agricultural Finance Corporation (AFC) to design the co-operative ride-on wholesale finance products.

Professional experience includes project and sector programme planning and monitoring in Kenya; knowledge and understanding of policy reforms (agriculture and public sector); preparation of Medium Term expenditure Framework (MTEF) and Medium Term Plans (MTP); County integrated development plans (CIDPs); programme-based public Budgeting (PBB) and performance management, monitoring a devaluation; and proven expertise in programme/project design, planning, and appraisal and implementation, monitoring and evaluation

**ACADEMIC AND PROFESSIONAL QUALIFICATION**

McGill University, Montreal, Canada - Master of Arts Economics (Economic Policy Management Certificate in Managerial French – 1997-1999

Bachelor of Science (Agriculture) – University of Nairobi – 1985-1988

**KEY QUALIFICATIONS**

Joram has more over 30 years' experience in the fields of agriculture, co-operative development, rural

development; policy analysis, formulation and strategy development; programme design, appraisal, management and evaluation; public performance management, and financial and economic analysis of projects and programs.

Joram has specialised as an agricultural/policy and development economist with special emphasis on policy issues, sector planning and project analysis within the agricultural and rural development sectors.

Professional experience includes project and sector programme planning and monitoring in Kenya.

Joram has experience in design and implementation of co-operative and Saccos programmes. He has worked as a Senior Assistant Commissioner for Cooperative Development, Ministry of Cooperative

#### Development and Marketing

- Reviewing the Strategic Plan for the Ministry of Co-operative Development & Marketing
- Team Leader – Implementation of the Programme of IFAD-supported Programme for Rural Outreach of Financial Innovations and Technologies (PROFIT)
- Team Leader - Development of Islamic-Finance compliant cooperative by – laws in order to develop co-operative societies in North Eastern and Coast provinces.
- Team Leader – Development of a Technical Cooperation Programme between the Food and Agriculture (FAO) and the Ministry of Co-operative Development & Marketing.
- Member - Technical Committee member representing Ministry in the formulation of the Country Programme Paper on Ending Drought Emergencies in Kenya and its Action Plan – a regional programme for the Horn of Africa/Intergovernmental Authority and Development (IGAD) Region (January – March 2012)

At the Ministry of Co-operative Development and Marketing, Joram was the Head of Department (New Cooperative Ventures). He was responsible for providing a platform for identifying new investments, collaboration, partnerships and associations among stakeholders in the cooperative sub-sector, supporting investment and partnership opportunities in the cooperative sub-sector, promoting, liaising and managing relationships with partners and investors, and coordinating development and marketing of investment proposals in collaboration with relevant agencies, ministries and organizations. The coffee sector was one of them

Joram was a member of various committees and task forces aimed at improving the performance of the co-operative sector in the country. He was Team Leader - Revitalize co-operative Societies in Nyanza province and Team Leader - Development of Islamic-Finance compliant cooperative by – laws in order to develop co-operative societies in North Eastern and Coast provinces and Team Leader – Development of a Technical Cooperation Programme between the Food and Agriculture (FAO) and the Ministry of Co-operative Development & Marketing. A number of these handled issues in the coffee sector

Joram has also undertaken several consultancies and participated as a facilitator and resource person in various courses and seminars organized by consultancy firms, private and public institutions on various socio-economic issues.

#### CONSULTANCY WORK

<i>Country</i>	<i>Date</i>	<i>Name and brief description of the project</i>
<b>Contracts for Development Associates A/S, 1999 – 2005</b>		
	September 2020 – June 2021	Performance Management Systems (PMS) Expert – including guiding County governments in performance reporting, facilitating mid-year evaluation of performance contract and facilitating end-of-year evaluation and release of results of performance contracts for the UNDP-Supported Consolidating Gains and Deepening Devolution Project in Kenya.
Kenya	July – September 2020	Assessment and verification of Results for the National Government Implementing Institutions for the World Bank-funded Kenya Devolution Support Program (KDSP-for- R). Client – Ministry of Devolution and Planning



<i>Country</i>	<i>Date</i>	<i>Name and brief description of the project</i>
Kenya	July 2019 – June 2020	Agricultural Economist for the Isiolo County Climate Smart Red Meat Value Chain Development Project (Kenya Climate Smart Agricultural Programme) to work with for the activities of provision of extension service for the Red Meat value chain and assisting in writing community proposals for micro-projects.
Kenya	July 2019 – June 2020	Agricultural Economist for the Laikipia County Climate Smart Sheep Value Chain Development Project (Kenya Climate Smart Agricultural Programme) to work with for the activities of provision of extension service for the Sheep value chain and assisting in writing community proposals for micro-projects.
Kenya	October – November 2019	National consultant to coordinate country data collection for FAO's Corporate Outcome Assessment, including survey coordinator manual and the questionnaires and participates in pre-survey training; ensuring timely follow-up with respondents and provides any additional support/clarification they may need (including some translations if required); checking the quality of the submitted questionnaires and following up on the filling of the questionnaires and collection of relevant policy and legislative documents
Kenya	May – June 2019	Team Leader - Performance Evaluation (assessment and verification) of the National Government Implementing Institutions for the World Bank-funded Kenya Devolution Support Program (KDSP-for- R). Client – Ministry of Devolution and Planning
Kenya	January – June 2019	Agricultural Economist for Detailed Design and Preparation of Tender Documents for Kaigonji Irrigation Project, Tetu Sub-County In Nyeri County Working under the consultancy services Firm Batiment Engineering and Associates Limited
Kenya	Jan. 2017 – June 2018	Consultant for Capacity Building Agricultural Finance Corporation (AFC) and Faulu Microfinance Bank under the BDO-EA Contract for the International fund for Agricultural Development (IFAD) funded Programme for Rural Outreach of Financial Innovations and Technologies (PROFIT). Client National Treasury of Kenya and Alliance for Green Revolution in Africa (AGRA). This was a Finance Value chain project to ensure that small-scale farmers are enabled and empowered to access financial resources for employment in various agricultural value chains
Kenya	Oct. 2016 – June 2017	Chief consultant - Performance Evaluation (assessment and verification) of the National Government Implementing Institutions for the World Bank-funded Kenya Devolution Support Program (KDSP-for- R). Client – Ministry of Devolution and Planning
Kenya	Aug. – Dec 2015	National Facilitator for the Formulation Process of the Multi-Year Strategic Plan and Result Framework for the Ministry of Agriculture, Livestock and Fisheries
	Jan – June 2016	Consultancy – Support to the Formulation of the National Strategy for Provision of Capacity Building to Counties. Client MoALF and GIZ/GFA
Kenya	July – September 2016	Consultant hired by the Performance Contracting Department in the Executive Office of the President to undertake Negotiations, Vetting and Evaluation of the Ministries, Departments and Agencies (MDAs) for the Financial Year 2015/16
Kenya	Sept. 2015 – February 2016	Consultant in the development of Resource Mobilization Strategy and public expenditure Review for Sustainable Land Management in Kenya, which has been finalized. Client – World Bank-funded Kenya Agricultural Productivity and Sustainable Land Management (KAPSLM) Project, Kenya Agricultural Productivity and Sustainable Land Management (KAPSLM) Project – 205/16
Kenya	August – Sept. 2015	Team leader – Evaluation of Performance Contracts in public service delivery and project/programme implementation of the Ministries in the County Government of Kitui for Financial Year 2015/16. Client – County Government of Kitui.

<i>Country</i>	<i>Date</i>	<i>Name and brief description of the project</i>
Kenya	June – July 2015	Team leader - Negotiations, Vetting of Performance contracts in public service delivery and project/programme implementation of the Ministries in the County Government of Kitui for Financial Year 2016/17. Client – County Government of Kitui
Kenya	July – September 2015	Evaluation of the Performance Contracting Department to undertake Negotiations, Vetting and Evaluation of the National Government Ministries, Departments and Agencies (MDAs) for the Financial Year 2014/15
Kenya	July 2015 – June 2016	Performance Monitoring and Evaluation of Enhanced National Irrigation Programme countrywide. Client National Irrigation Board, Kenya
Kenya	May – June 2015	End Term Evaluation of the Sustainable Empty Pesticide Containers Initiative (SEPCI) Project implemented by the Agrochemicals Association of Kenya (AAK) and the World Bank-financed Kenya Agricultural Productivity and Agribusiness Project (KAPAP)
	August 2012 – May 2014	<ul style="list-style-type: none"> <li>• Deputy Director, Performance Contracting Department –Performance management for public institutions,</li> <li>• Secretary/Team Leader - Developing of 2nd Medium Term Plan of the Vision 2030 for Public Sector Reforms ( January – April 2013)</li> <li>• Participated in the MTEF budget for the Department and Ministry of Planning and Devolution</li> </ul>
	<u>Aug 2009 – July 2012</u>	<ul style="list-style-type: none"> <li>• Senior Assistant Commissioner for Cooperative Development, Ministry of Cooperative Development and Marketing</li> <li>• Reviewing of the Strategic Plan for the Ministry of Co-operative Development &amp; Marketing</li> <li>• Team Leader – Implementation of the Programme of IFAD-supported Programme for Rural Outreach of Financial Innovations and Technologies (PROFIT)</li> <li>• Team Leader (Technical) – Ministerial MTEF Budget committee</li> <li>• Team Leader (Technical) – Ministerial Programme-based preparation Committee</li> <li>• Team Leader (Technical) – Ministerial medium Term Plan (MTP) Preparation committee</li> <li>• Team Leader - Development of Islamic-Finance compliant cooperative by – laws in order to develop co-operative societies in North Eastern and Coast provinces.</li> <li>• Team Leader – Development of a Technical Cooperation Programme between the Food and Agriculture (FAO) and the Ministry of Co-operative Development &amp; Marketing.</li> <li>• Member - Technical Committee member representing Ministry in the formulation of the Country Programme Paper on Ending Drought Emergencies in Kenya and its Action Plan – a regional programme for the Horn of Africa/Intergovernmental Authority and Development (IGAD) Region (January – March 2012)</li> </ul>
Kenya	June 2005 – July 2009	<ul style="list-style-type: none"> <li>• Programme Manager - Agricultural Sector Coordination Unit (ASCU) responsible for Agricultural Inputs and Financial Services</li> <li>• Member/Task Force _ Preparation of Proposal for the Establishment of an IGAD Centre for Dry lands and Livestock Development in the Region.</li> <li>• Member/Task Force – Development of Kenya’s National Agribusiness Strategy – Making Kenya’s Agribusiness Sector a Competitive Driver of Growth.</li> <li>• Strategy launched in the just concluded 3rd Agricultural sector Conference held in Safari park in Nairobi in October 2012.</li> <li>• Conceptualization and development of the Program Design and Implementation for the National Accelerated Agricultural Inputs Access Programme</li> <li>• Participated in the development of the seed policy and the National (variety) Performance Trials regulations under the Plant Seed and Varieties Act</li> </ul>

Kenya	July 1999 – May 2005	<ul style="list-style-type: none"> <li>• Senior Agriculture Officer/Market Analyst – Marketing Information Branch, Ministry of Agriculture</li> <li>• Implementation of an (IGAD) Marketing Information System (MIS) Project for Kenya whose objective is to enhance food security in the IGAD sub-region;</li> <li>• Participated in the development of the Smallholder Dairy Commercialization Programme (SDCP) and Smallholder Horticulture Marketing Programme (SHOMAP) both funded by the Int'l Fund for Agricultural Development (IFAD) and Government of Kenya (GoK), currently being implemented by the Ministry of Agriculture, Livestock and Fisheries</li> <li>• Participated in the development of the Smallholder Horticulture Project funded by the African development Bank (AfDB) and Government of Kenya (GoK) being implemented by the Ministry of Agriculture, Livestock and Fisheries</li> </ul>
-------	----------------------	--

## PROFESSIONAL EXPERIENCE

Date	Jan. 2017 – June 2020
Location	Nairobi, Kenya
Company	Agricultural Finance Corporation (AFC) and Faulu Microfinance Bank under the BDO-EA Contract
Position	Associate Consultant BDO-EA
Description	Consultant for Capacity Building for the International fund for Agricultural Development (IFAD) funded Programme for Rural Outreach of Financial Innovations and Technologies (PROFIT). Client National Treasury of Kenya and IFAD/Alliance for Green Revolution in Africa (AGRA).
Contact Name and Tel./Email	

Date	Oct. 2016 – June 2017
Location	Nairobi, Kenya
Company	Individual consultant
Position	Chief consultant
Description	Performance Evaluation (assessment and verification) of the National Government Implementing Institutions for the World Bank-funded Kenya Devolution Support Program (KDSP-for- R).
Contact Name and Tel./Email	Martin Anyango Tel.: +254 Email: anyangomartin@gmail.com

Date	Jan – June 2016
Location	Nairobi, Kenya
Company	Individual consultant
Position	Team Leader
Description	Consultancy – Support to the Formulation of the National Strategy for Provision of Capacity Building to Counties. Client MoALF and GIZ/GFA.
Contact Name and Tel./Email	Veronica Ndetu Tel.: +254 Email: nzilani2014@gmail.com

Date	Sept. 2015 – February 2016
Location	Nairobi, Kenya
Company	Bell Consulting Kenya Ltd
Position	Associate Consultant
Description	Expert - Public Expenditure Review and development of Resource Mobilization Strategy and for Sustainable Land Management in Kenya which has been finalized. Client – World Bank-funded Kenya Agricultural Productivity and Sustainable Land Management (KAPSLM) Project, Kenya Agricultural Productivity and Sustainable

	Land Management (KAPSLM) Project – 205/16
Contact Name and Tel./Email	Wilson Kinyua Tel.: +254 722 176 612 Email: wkkinyua@gmail.com

Date	Aug. – Dec 2015
Location	Nairobi, Kenya
Company	Individual consultant
Position	Team Leader
Description	National Facilitator for the Formulation Process of the Multi-Year Strategic Plan and Result Framework for the Ministry of Agriculture, Livestock and Fisheries
Contact Name and Tel./Email	Veronica Ndetu Tel.: +254 Email: nzilani2014@gmail.com

Date	August – Sept. 2015
Location	County Government of Kitui Kitui, Kitui County
Company	Individual consultant
Position	Team Leader
Description	Evaluation of Performance Contracts in public service delivery and project/programme implementation of the Ministries in the County Government of Kitui for Financial Year 2015/16.
Contact Name and Tel./Email	Peter Kamau Tel.: +254 710 393 203 Email: kamau.nderu@gmail.com

Date	June – July 2015
Location	County Government of Kitui Kitui, Kitui County
Company	Individual consultant
Position	Team Leader
Description	Negotiations, Vetting of Performance contracts in public service delivery and project/programme implementation of the Ministries in the County Government of Kitui for Financial Year 2016/17.
Contact Name and Tel./Email	Peter Kamau Tel.: +254 710 393 203 Email: kamau.nderu@gmail.com

Date	July – September 2016
Location	Nairobi, Kenya
Company	Individual consultant
Position	Team Leader
Description	Consultant hired by the Performance Contracting Department in the Executive Office of the President to undertake Negotiations, Vetting and Evaluation of the Ministries, Departments and Agencies (MDAs) for the Financial Year 2015/16
Contact Name and Tel./Email	Peter Kamau Tel.: +254 710 393 203 Email: kamau.nderu@gmail.com

Date	July 2015 – June 2016
Location	Nairobi, Kenya
Company	OCRA Consultant Ltd
Position	Associate Consultant
Description	Performance Monitoring and Evaluation of Enhanced National Irrigation Programme countrywide. Client National Irrigation Board, Kenya
Contact Name and Tel./Email	Bernard M. Maina Tel.: +254 397 440 Email: ocraceo@gmail.com <a href="mailto:ocracconsult@gmail.com">ocracconsult@gmail.com</a> <a href="mailto:bmmacmaina@yahoo.com">bmmacmaina@yahoo.com</a>

Date	July 2015 – June 2016
Location	Nairobi, Kenya

Company	Best Results Ltd
Position	Associate Consultant
Description	End Term Evaluation of the Sustainable Empty Pesticide Containers Initiative (SEPCI) Project implemented by the Agrochemicals Association of Kenya (AAK) and the World Bank-financed Kenya Agricultural Productivity and Agribusiness Project (KAPAP).
Contact Name and Tel./Email	Dr Andrew M. Karanja Tel.: +254 Email: karanjaam@yahoo.com

**Joram M. Gicheru**



**20/02/2021**

**Appendix 3:** Summary of other works done jointly through the Noble Consultants Ltd or individually by the consultants

The project sheets below provide details of some of the relevant assignments for which the firm or the key experts were legally contracted individually or in association with other firms or individuals within the last five years. The tables below show a summary of the projects.

<b>No</b>	<b>Project Name</b>	<b>Country</b>	<b>Client</b>	<b>Source of Funds</b>	<b>Year of Implemented</b>
1	End term Climate Academy Project was developed to increase the climate change resilience of coffee farmers organized in selected FCSs	Kenya	Fair Trade Africa	Fair Trade Africa	2020
2	Consultant for Capacity Building for the International fund for Agricultural Development (IFAD) funded Programme for Rural Outreach of Financial Innovations and Technologies (PROFIT).).	Kenya	Client National Treasury of Kenya	IFAD/Alliance for Green Revolution in Africa (AGRA)	2017-2020
3	Midterm Evaluation - Agricultural and Market Linkages (AMAL) Project-2020	Kenya	Welthungerhilfe	BMZ	Nov 2020-Jan-2021
4	Baseline survey -agricultural & market linkages (amal) project Tana River, Kilifi, Kitui and Makueni County's	Kenya	Welthungerhilfe	FAIRTRADE AFRICA	Nov-Dec 2019
5	Market and Economic Feasibility Study for Granulated Lime in Kenya	Kenya	Kenya Market Trust	KMT	May -Nov 2020
6	End of term evaluation Cassava Mechanization and Agro-processing Project (CAMAP)	Zambia, Uganda and Nigeria	AATF -African Agricultural Technology Foundation	DFID	Jan -Dec 2020
7	Design and Capital expenditure estimation of a 5,200ha farm (5400 beef cattle) production and processing	Tanzania	PWC	NECAI-Egypt	Sept -Nov 2020
8	Review of Possible Socio-Economic Impacts of Privatization of State- Owned Sugar Factories in Western Kenya.	Kenya	Merali	Privatization Commission of Kenya	Sept-Oct 2020
9	Development of viable business models for poultry and cowpeas value chains in Turkana county, Kenya. Technical analysis, production analysis, marketing analysis, agro-processing/value addition risk analysis, models design, financial modeling	Kenya	World Food programme	WFP	July-Dec 2020

10	Feasibility Study of Moringa Processing and Restructuring the Business Model for Emuka Moringa Farmers' Co-Operative Society	Kenya	Childfund	Childfund	2019
11	Community Proposal Appraisal, Monitoring and Evaluation (Both Desk and Field)	Kenya	UTaNRMP	GoK, IFAD, Spanish Trust Fund	2018
12	Consultancy services to conduct a study to ascertain the state of climate change and environment in ASAL Of Northern Kenya	Kenya	ACTs Kenya	DFID	2017
13	Capacity Need assessment for Small Holder Irrigation and Value addition and project	Kenya	FAO	GAFFSP-Global Agriculture and Food Security Program	2017
14	Market assessment and value chain analysis for export vegetables in Embu, Nyeri, Kirinyaga and Meru Counties	Kenya	Micro Enterprise Support Programme Trust (MESPT)	DANIDA	2017
15	Documentation and sharing of achievements and lessons learnt from the mango value chain intervention in Makueni and Kitui	Kenya	Micro Enterprise Support Programme Trust (MESPT)	DANIDA	2017
16	Documentation and sharing of achievements and lessons learnt from the export vegetables value chain intervention in Makueni and Kitui Counties	Kenya	Micro Enterprise Support Programme Trust (MESPT)	DANIDA	2017
17	End Term Evaluation for Better Initiative Cotton in Kerio Valley implemented Fiber directorate (former CODA)	Kenya	Solidaridad Eastern and Central Africa Expertise Centre SECAEC)	Dutch Embassy	2016
18	Development of the Smallholder Dairy Commercialization Programme (SDCP) and Smallholder Horticulture Marketing Programme (SHOMAP) being implemented by the	Kenya	Ministry of Agriculture, Livestock and Fisheries	Int'l Fund for Agricultural Development (IFAD) and Government of Kenya (GoK), currently	2016
19	Development of the Smallholder Horticulture Project being implemented by the	Kenya	Ministry of Agriculture, Livestock and Fisheries	African development Bank (AfDB) and Government of Kenya 20(GoK)	2016

20	End Term Evaluation for The Horticulture And Food Security Project (HFSP)	Kenya	Solidaridad Eastern and Central Africa Expertise Centre -SECAEC)	Dutch Embassy	2015
21	MTR for Community Development Programme phase 4 (CDP-4), implemented by CDTF under Community Development Initiatives (CDI) and Community Environment Facility (CEF)	Kenya	Community Development Fund Trust (CDTF)	EU	2014
22	Development of 3 Agro-processing plants ( <i>Cereals, Oil refinery and oil Extraction</i> ) – design expert and Business analyst	Somaliland	DAI	USAID	2014
23	Rapid Baseline Survey for the Regional Pastoral Livelihoods Resilience Program (RPLRP)	Kenya	Ministry of Agriculture, Livestock and Fisheries	GoK	2013
24	ESIA Proposed Geothermal Drilling Materials Storage Warehouse at GDC Kabarak Farm, Nakuru County.	Kenya	GDC	GDC	2013
25	Business Performance Appraisal of 22 Agribusinesses engaged in value addition (and agro-processing of crop and animal products), marketing etc	Kenya	MOA	FAO	2013